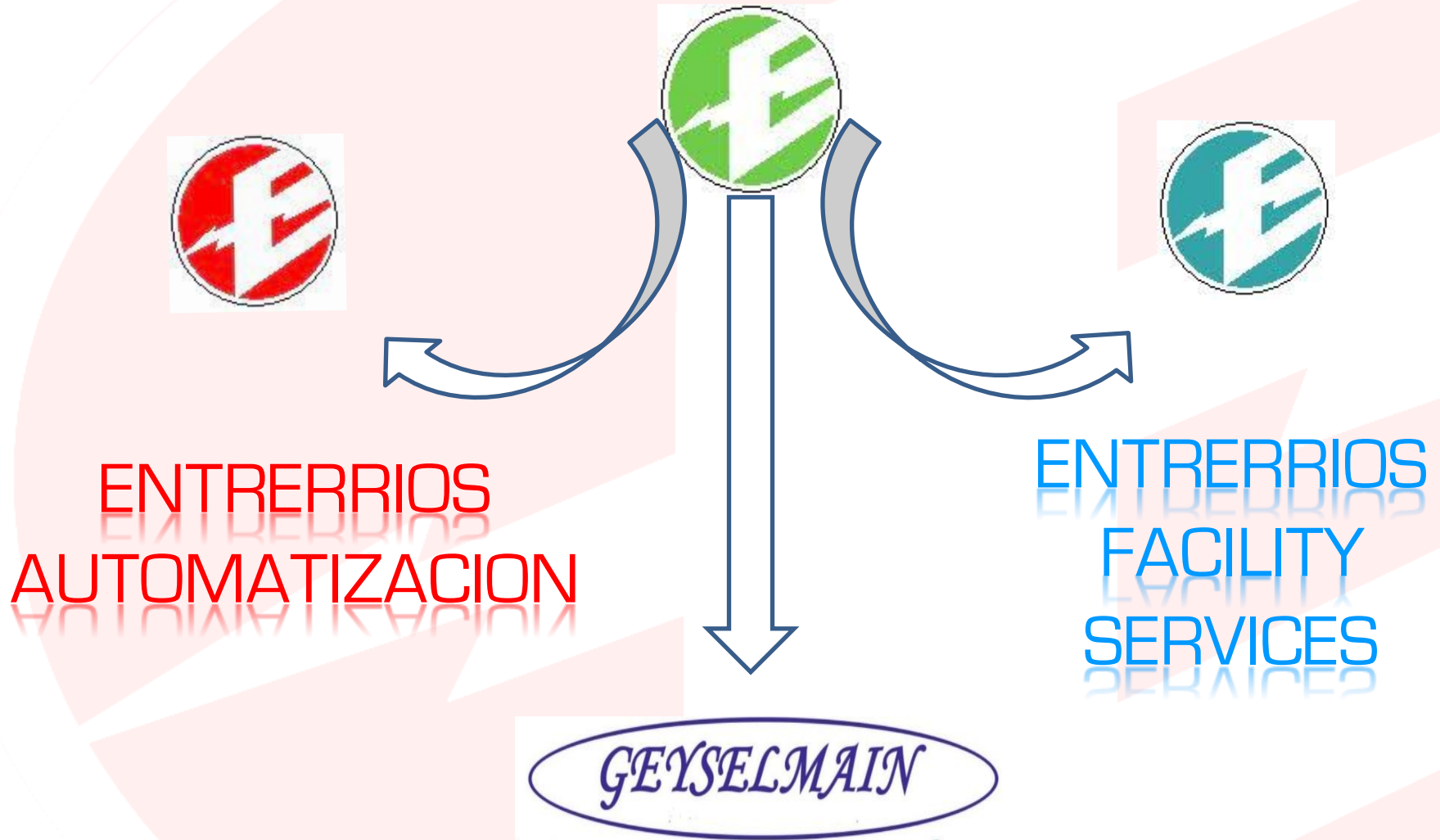


ENTRERRIOS GROUP





**ENTRERRÍOS
GROUP**



INTRODUCTION

Entrerríos Group is a leader group and a reference in the industrial facilities sector, both nationally and internationally, which brings together three companies, **Entrerríos Automatización S.A.** (industrial automation and electric installations, both LV and HV), **Entrerríos Facility Services S.A.** and **Geyselmain S.L.** (maintenance, installations of fluids, communication networks, civil work, movement of machinery, etc...); **Entrerríos Group** proved its efficiency and experience accomplishing projects of great scope for companies such as **Opel, Volkswagen, SEAT, CAF, INDITEX, CLH, PSA, Grupo Renault-Nissan, Ford, etc ...**, **Entrerríos Group** is working with them since 1986 with an **around 250 people staff**.

Entrerríos Automatización, Entrerríos Facility Services y Geyselmain are strategically defined companies to **generate complete solutions** in projects, installations and maintenance, offering **quality, warranty and fastness**; putting at the disposal of its customers all their resources, personnel and infrastructure, and of course keeping as **priority** the **safety** and **ethics at work**.

In order to earn the **TRUST** of our **CLIENTS** our company has a global and flexible organization that is able to offer a customized service to suit every need; taking advantage of all our potential for the benefit of an optimal management, for both small and large projects.



AUTOMATION

- **Engineering,** design, manufacturing, assembly and start up for an **optimal automation**
- **Supply** and **programming** of leading **PLC** brands: Siemens, Bosch, Schneider Electric, Moeller, Omron, Rockwell (Allen Bradley), General Electric
- Operating, **programming** and simulation of **robots**
- **SCADA** Systems (WinCC de Siemens / Intouch de Wonderware / Monitor Pro de Schneider / Proficy **Cimplicity** de General Electric ...)

ELECTRICAL ASSEMBLIES

- Indoor and outdoor **lighting**
- Supply and assembly of control and power **electrical panels**
- **Electrical installation:** Control and power **wiring** and **connecting**
- Ground and aerial **conveyors**
- **High Voltage** installations
- Adequacy of safety in machinery and equipment according to Real Decreto 1215/97
- **ATEX** Installations in areas with high risk of explosion
- **Photovoltaic** installations

FLUID MECHANICS

- **Heating, ventilation and air conditioning systems**
- **Waste waters** systems
- **Collecting** and **pumping** water systems
- **Fire** prevention systems
- **Installations and nets of fluids (Water, gas, steam, compressed air and water cooling)**

EPC

- **Turnkey projects:**
- Engineering
- Civil Works
- Mechanics
- Installations
- Etc....



COMMUNICATIONS

➤ Installation, wiring and **fiber optic** certification

➤ Industrial communication **networks**
(Ethernet, Profibus, Profinet / etc ...)

ARTIFICIAL VISION AND TRACEABILITY

➤ Industrial identification and **marking**

➤ **Code** reading

➤ Optical control with **artificial vision**

➤ Software for integral management of the **traceability**

MAINTENANCE

➤ **Continuous productive maintenance** service

➤ **Continuous electrical maintenance** service, software, SCADA, nets, PLCs, etc

➤ **Continuous mechanical maintenance** service

➤ **Continuous civil works** service

➤ **Continuous cleaning services**, both technical and ordinary.

MECHANICS

➤ **Engineering and design:** CAD 3D, CAM y CAE.

➤ Machining

➤ **Special machinery**

➤ Metallic structures

➤ Tools

➤ Metal works

➤ Movement of machinery

➤ Dismantling of production lines



Entrerrios Group develops works in the main sectors of society and important companies, inside and outside the industry, distributed in diverse sectors, such as:

❖ SECTOR

- **AUTOMOBILE**
- **CONSTRUCTION**
- **LOGISTICS**
- **COMMUNICATIONS**
- **MACHINERY MANUFACTURERS**
- **PHOTOVOLTAIC INSTALLATIONS**
- **PUMPING UNITS**
- **PETROCHEMICAL**

❖ INDUSTRY

- **GLASS**
- **TEXTIL**
- **MINING**
- **PAPER**
- **METALLURGICAL**
- **PROCESSING**
- **CHEMICAL**
- **FOOD**
- **BODYWORK**
- **PHARMACEUTICAL**
- **OIL & GAS**



CLIENTS



AUTOMOBILE

- ☐ **OPEL, PSA, Stellantis**
- ☐ **SEAT**
- ☐ **Grupo Volkswagen**
- ☐ **Valeo**
- ☐ **FORD**
- ☐ **RENAULT**
- ☐ **ENLOG**
- ☐ **BOSAL**
- ☐ **Gestamp**
- ☐ **ADIENT Automotive (Johnson Controls)**
- ☐ **TMS (Turnkey Manufacturing Solutions GmbH)**
- ☐ **KONGSBERG Actuation Systems**
- ☐ **Faurecia**
- ☐ **ArcelorMittal Tailored Blank**
- ☐ **KIRCHHOFF España**
- ☐ **LEAR Corporation Asientos**
- ☐ **Mcsyncro France**
- ☐ **Android Industries Zaragoza**
- ☐ **Proma Hispania**
- ☐ **TI Group**
- ☐ **CIEMMADA**
- ☐ **Cooper Standard**
- ☐ **Nothelfer GmbH**
- ☐ **Plastic OMNIUM Automotive**
- ☐ **Automotive Interiors Zippex (MAGNA)**



CLIENTS



CONSTRUCTION

- ☐ **Acciona**
- ☐ **Dragados**
- ☐ **Construcciones San José**
- ☐ **Mariano López Navarro**
- ☐ **FCC**
- ☐ **DHO**
- ☐ **GTM**
- ☐ **Inobare**
- ☐ **Sorigué**



CLIENTS



INDUSTRY

PROCESSING

- ☐ BSH
- ☐ TEKA Industrial

FURNITURE

- ☐ HMY YUDIGAR

METALLURGICAL

- ☐ Inalsa
- ☐ CELSA
- ☐ Casting Ros
- ☐ Fundiciones Miguel Ros



CLIENTS



INDUSTRY

GLASS

- ❑ ***Vicasa (Saint - Gobain Vicasa) - VERALLIA***

PLASTIC

- ❑ ***Araven Group***

CHEMICAL

- ❑ **NUREL**

- ❑ **FMC Foret**

- ❑ **Perorsa**

- ❑ **IQE (Industrias Quimicas del Ebro)**

- ❑ **Adiego Hnos.**

- ❑ **Budenheim Iberica**

- ❑ **NOVAPET**

- ❑ **Carburo del Cinca**



CLIENTS



INDUSTRY

TEXTIL

☐ **Grupo Inditex**

- Zara
- Bershka

- Stradivarius
- Massimo Dutti

- Pull and Bear
- Zara Home

☐ **BRILEN**

PAPER

☐ **SAICA**

☐ **Torraspapel (Montañanesa)**

☐ **MONDI**

FOOD

☐ **CALADERO**

☐ **MOWI**

☐ **NESTLÉ**

☐ **PASTAS GALLO**

☐ **NUTRIAD**

☐ **PANISHOP**



CLIENTS



INDUSTRY

OIL & GAS

- ☐ CLH
- ☐ VOPAK TERQUIMSA
- ☐ WÄRTSILÄ
- ☐ LAPESA

PHARMACEUTICAL

- ☐ Advanced Accelerator Applications Ibérica (AAA)
- ☐ Casen Recordati



MACHINERY MANUFACTURERS

- ☐ **ABB**
- ☐ **Hitachi**
- ☐ **CAF**
- ☐ **BOSCH REXROTH**
- ☐ **DÜRR SYSTEM SPAIN**
- ☐ **SIEMENS**
- ☐ **Schneider Electric España**
- ☐ **Indu-Equip**
- ☐ **Eclipse Combustion**
- ☐ **TAIM WESSER**
- ☐ **THYSSENKRUPP GmbH**
- ☐ **Wittur Elevator**
- ☐ **CARRIER ESPAÑA**
- ☐ **Actemium Handling Systems**
- ☐ **ELTHERM**
- ☐ **EXIDE**
- ☐ **IRM**
- ☐ **FAGOR Arrasate Service**
- ☐ **FFT (Tecnología Automoción)**
- ☐ **FIVES Conveying**
- ☐ **GAYPASA**
- ☐ **INGEMETAL**
- ☐ **ISTOBAL (División Iberia)**
- ☐ **CERNEY**
- ☐ **EM GMSA**
- ☐ **NATUS GmbH-CO.KG**
- ☐ **Industrias Hidráulicas**
- ☐ **Maquinaria Nervión**
- ☐ **Talleres Mercier**
- ☐ **SCHAKO**



CLIENTS



LOGISTICS

- ☐ **MARCOTRAN Transportes Internacionales**
- ☐ **GRUPAJES EUROPEOS**
- ☐ **CARRERAS GRUPO LOGISTICO**
- ☐ **GRUPO SESÉ**
- ☐ **TRANSFESA**
- ☐ **BERSHKA LOGISTICA**
- ☐ **LOGITERS LOGISTICA**
- ☐ **C. OPER. LOGISTICAS INTEGRALES NORTE**
- ☐ **SPAIN CAR**
- ☐ **TRADISA**
- ☐ **VIA AUGUSTA**



CLIENTS



BODYWORK INDUSTRY

- ❑ **LECIÑENA**
- ❑ **SCHMITZ CARGOBULL**

MINING INDUSTRY

- ❑ **S.A. Minería y Tecnología de Arcillas (MYTA)**

PUMPING UNITS

- ❑ **Torres de Segre**
- ❑ **Las Garrigues**
- ❑ **SASTESA**



PHOTOVOLTAIC INSTALLATIONS

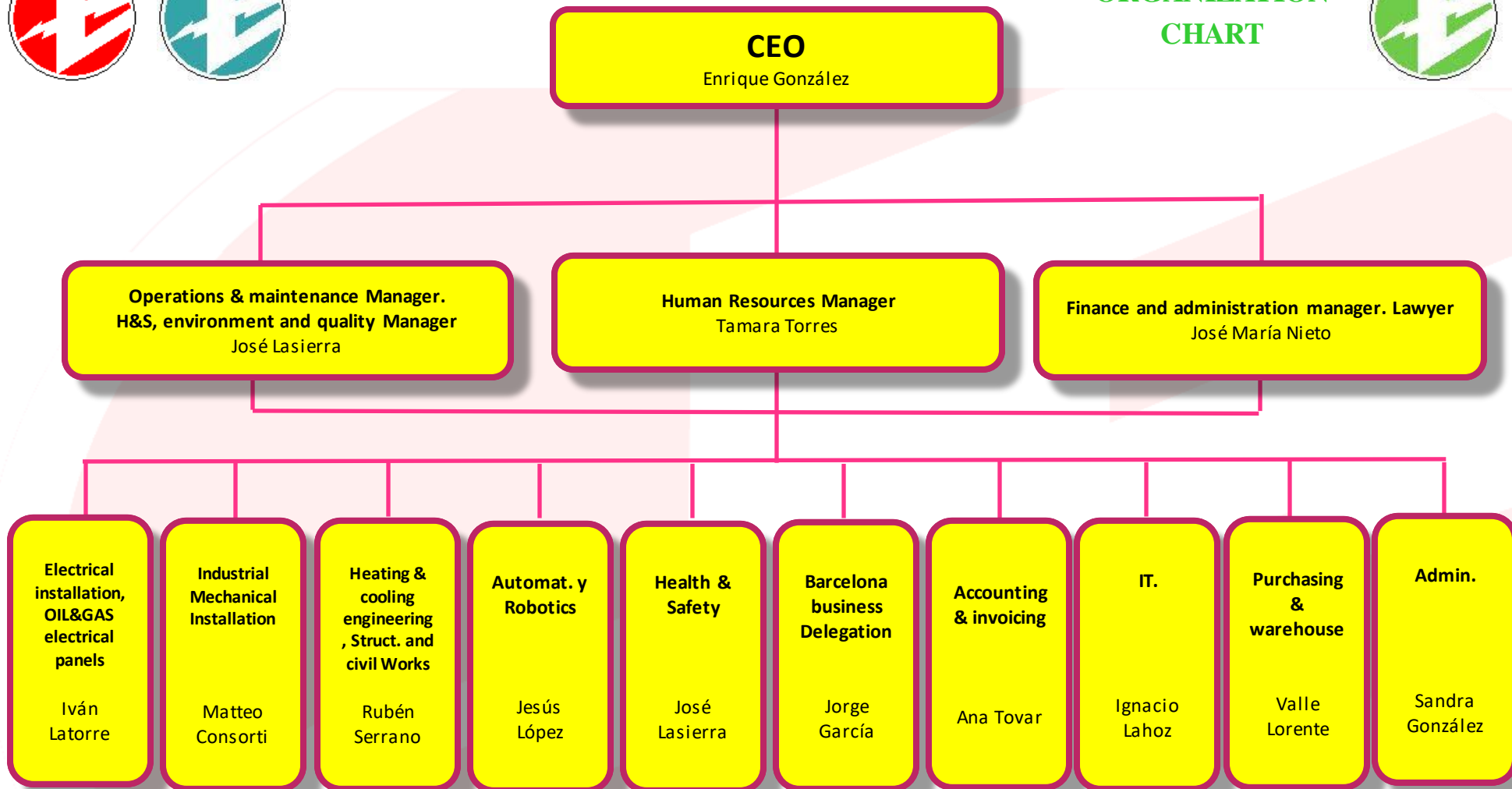
- ❑ **VEOLIA**
- ❑ **DEERS Green Power Development**

COMMUNICATIONS

- ❑ **MOVISTAR (TELEFONICA DE ESPAÑA)**
- ❑ **VODAFONE**
- ❑ **TELNET Redes Inteligentes**
- ❑ **Torrescámara y Cía de Obras**
- ❑ **Cables De Comunicaciones**

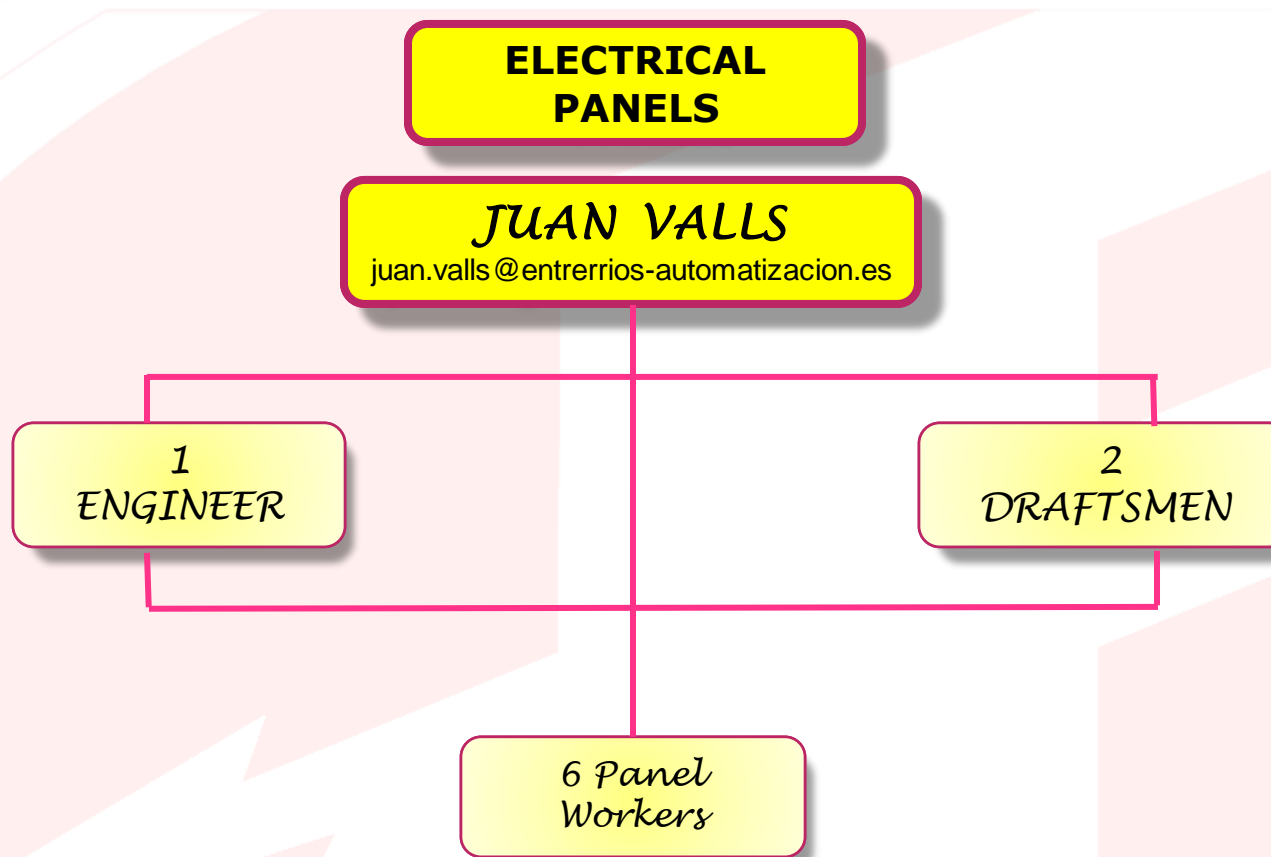


ORGANIZATION CHART



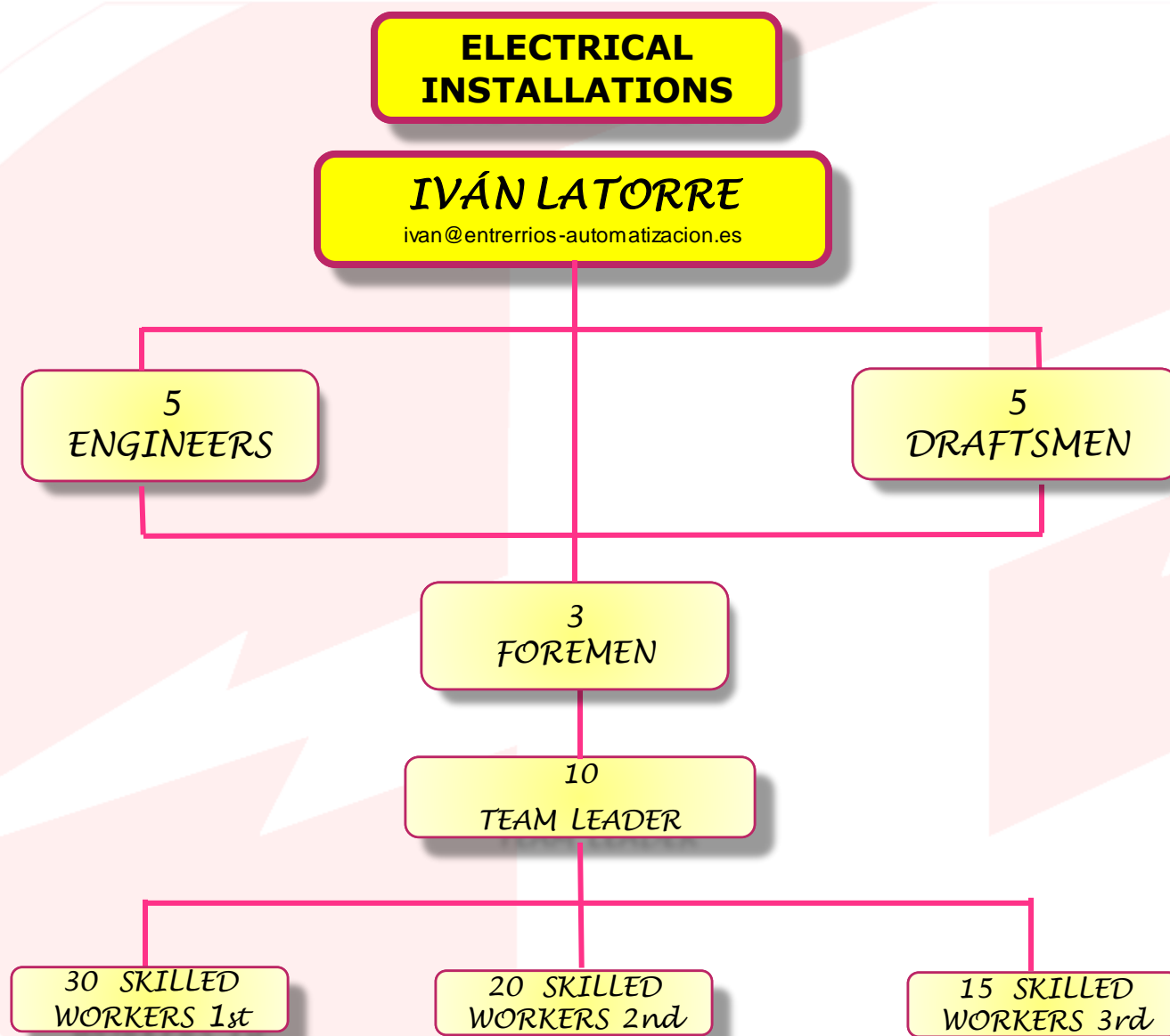


ORGANIZATION CHART





ORGANIZATION CHART





ORGANIZATION CHART



AUTOMATION

JESUS LOPEZ

jesus.lopez@entrerrios-automatizacion.es

12
PLC
PROGRAMMERS

5
ROBOTS
PROGRAMMERS

8
SCADA
PROGRAMMERS



ORGANIZATION CHART



MECHANICS

MATTEO CONSORTI

m.consorti@entrerrios-automatizacion.es

4

**MECHANICAL
ENGINEERS**

2

DRAFTSMEN

4

**PRODUCTION
COORDINATORS**

2

FOREMEN

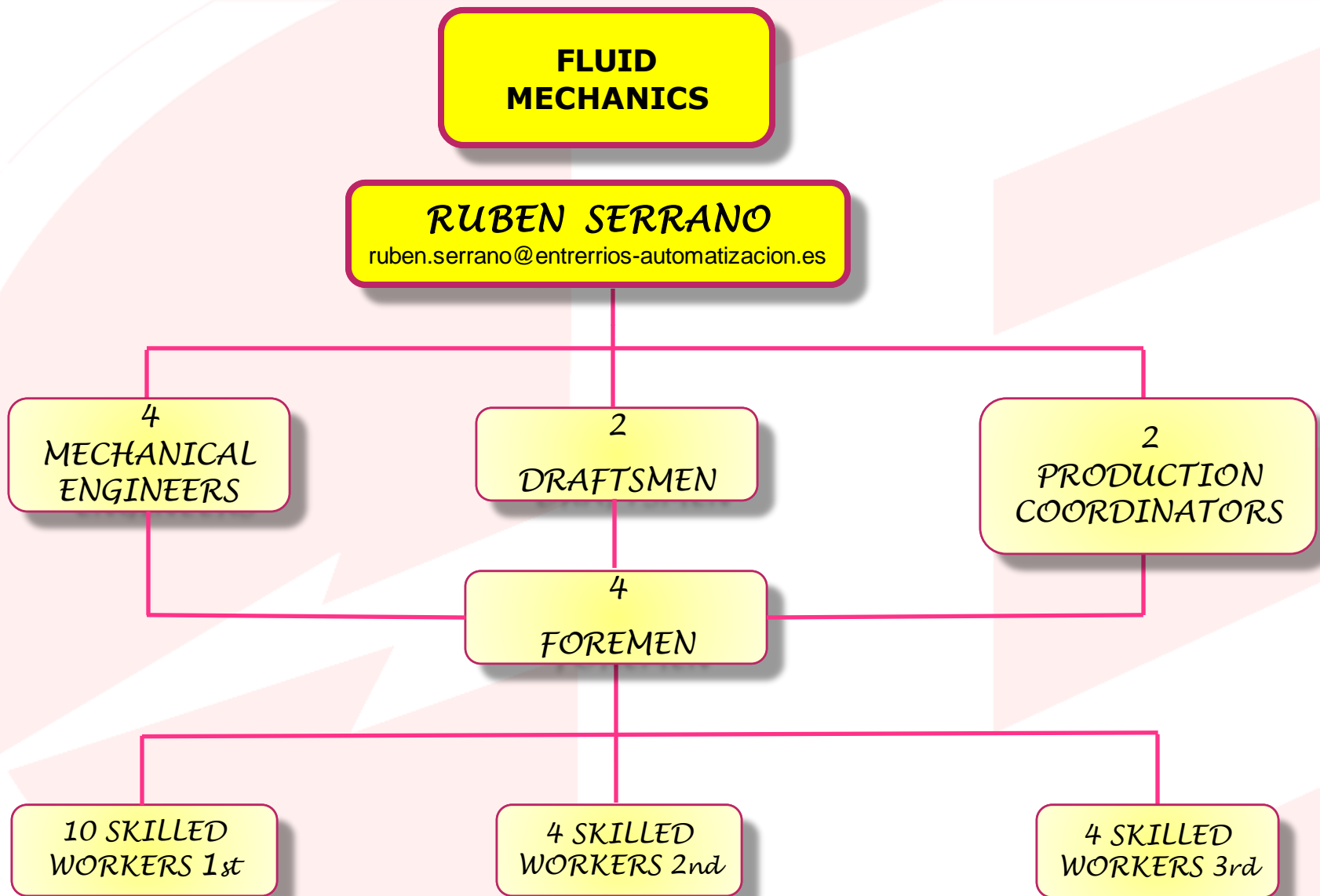
**10 SKILLED
WORKERS 1st**

**5 SKILLED
WORKERS 2nd**

**2 SKILLED
WORKERS 3rd**

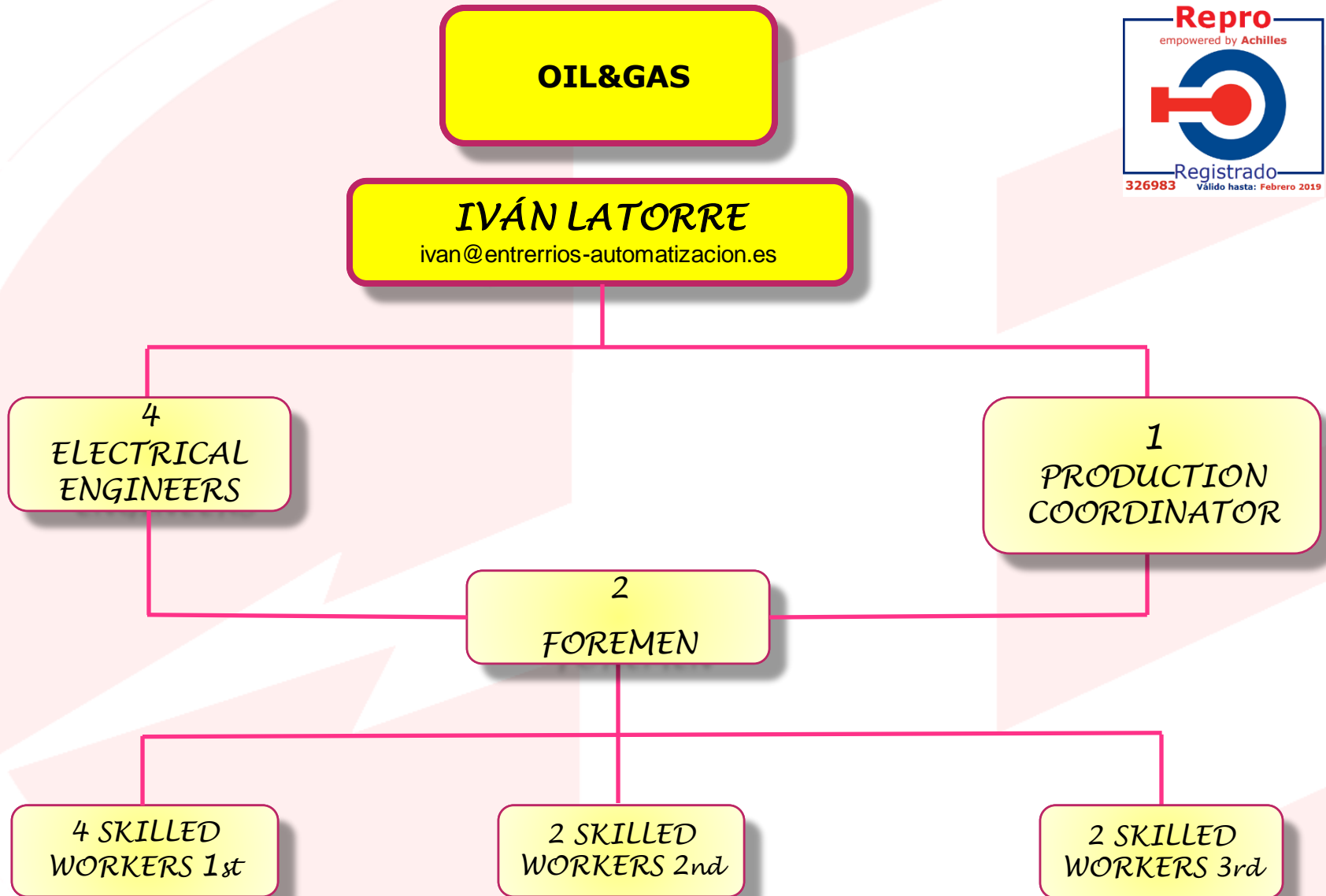


ORGANIZATION CHART



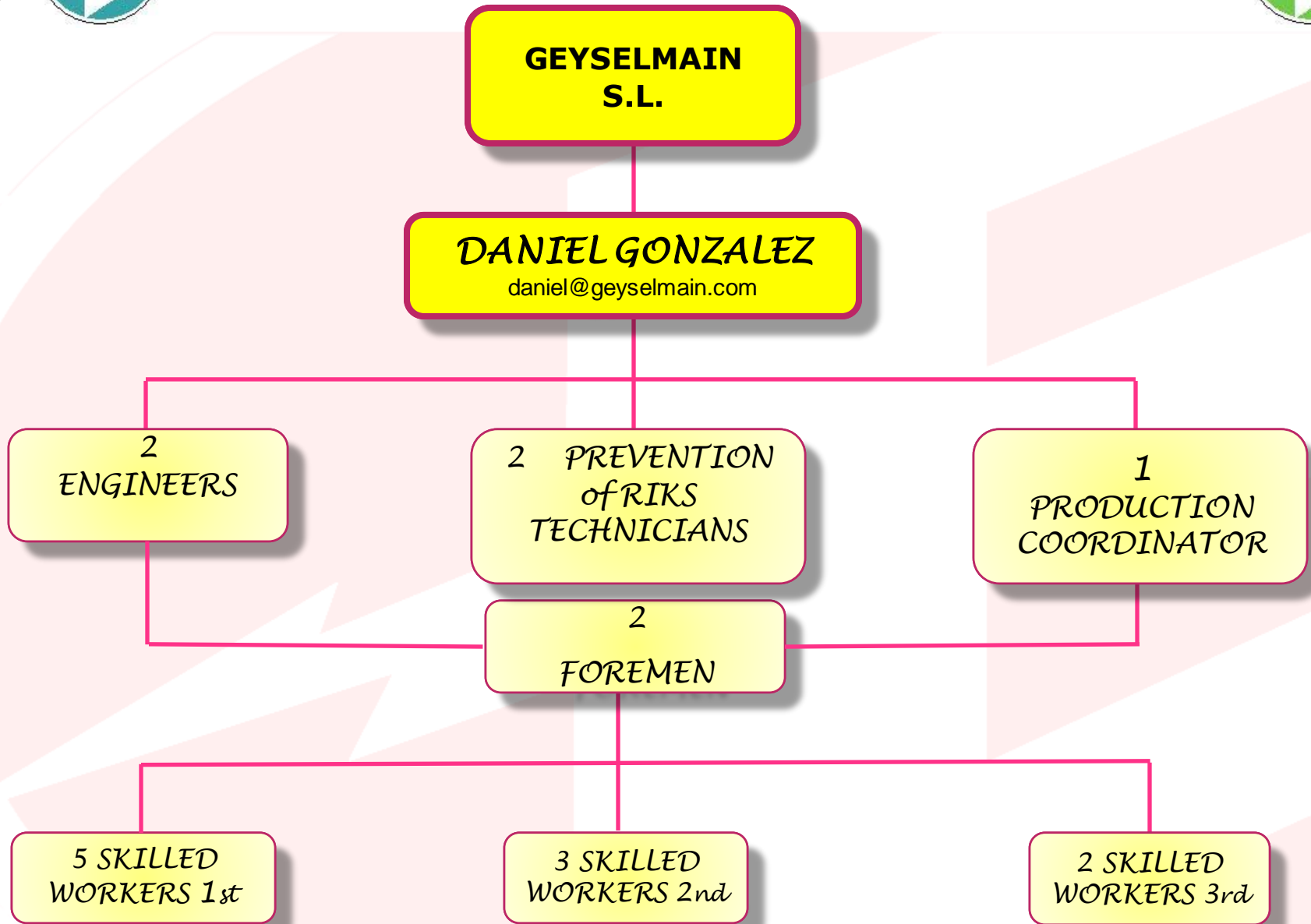


ORGANIZATION CHART



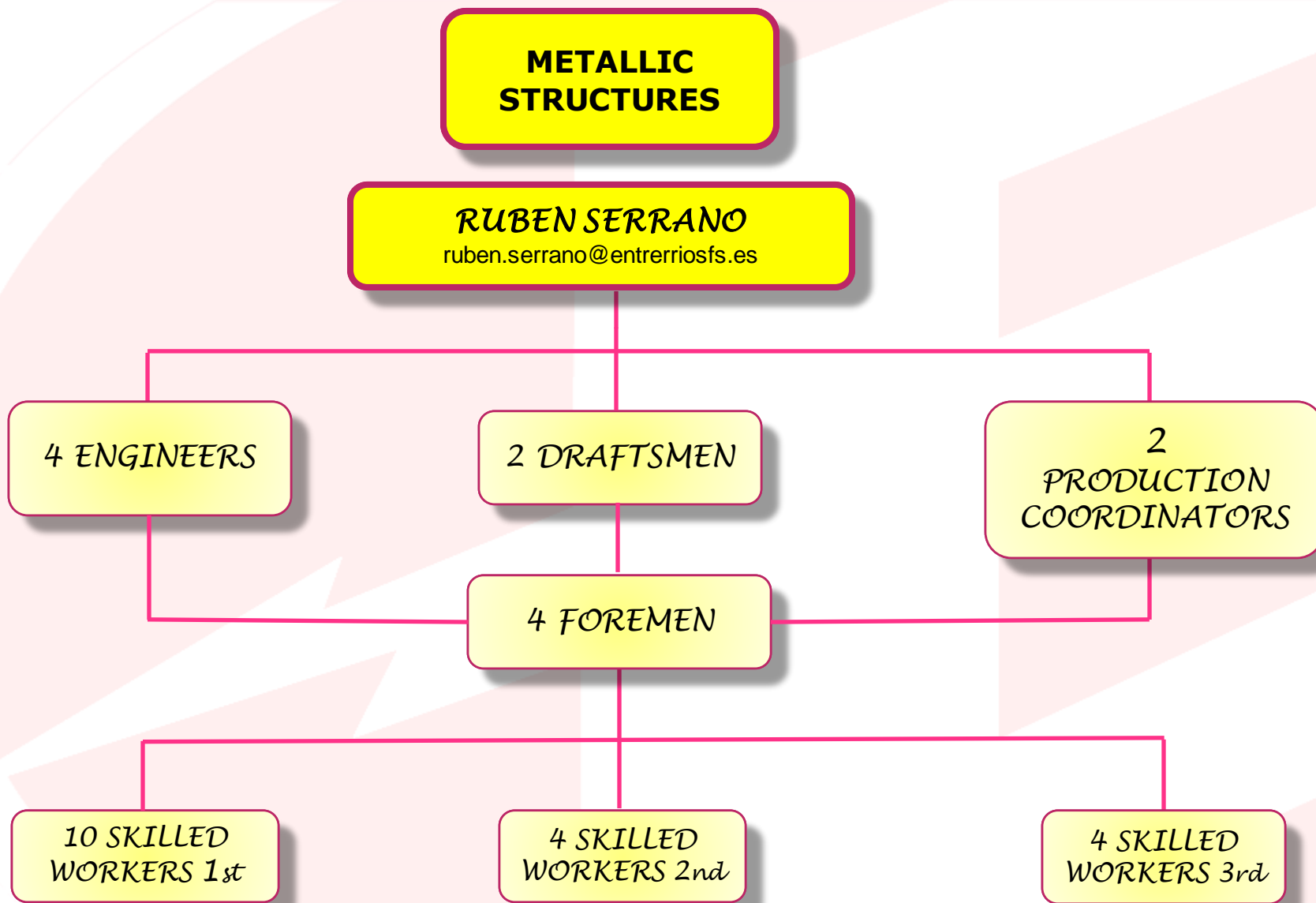


ORGANIZATION CHART



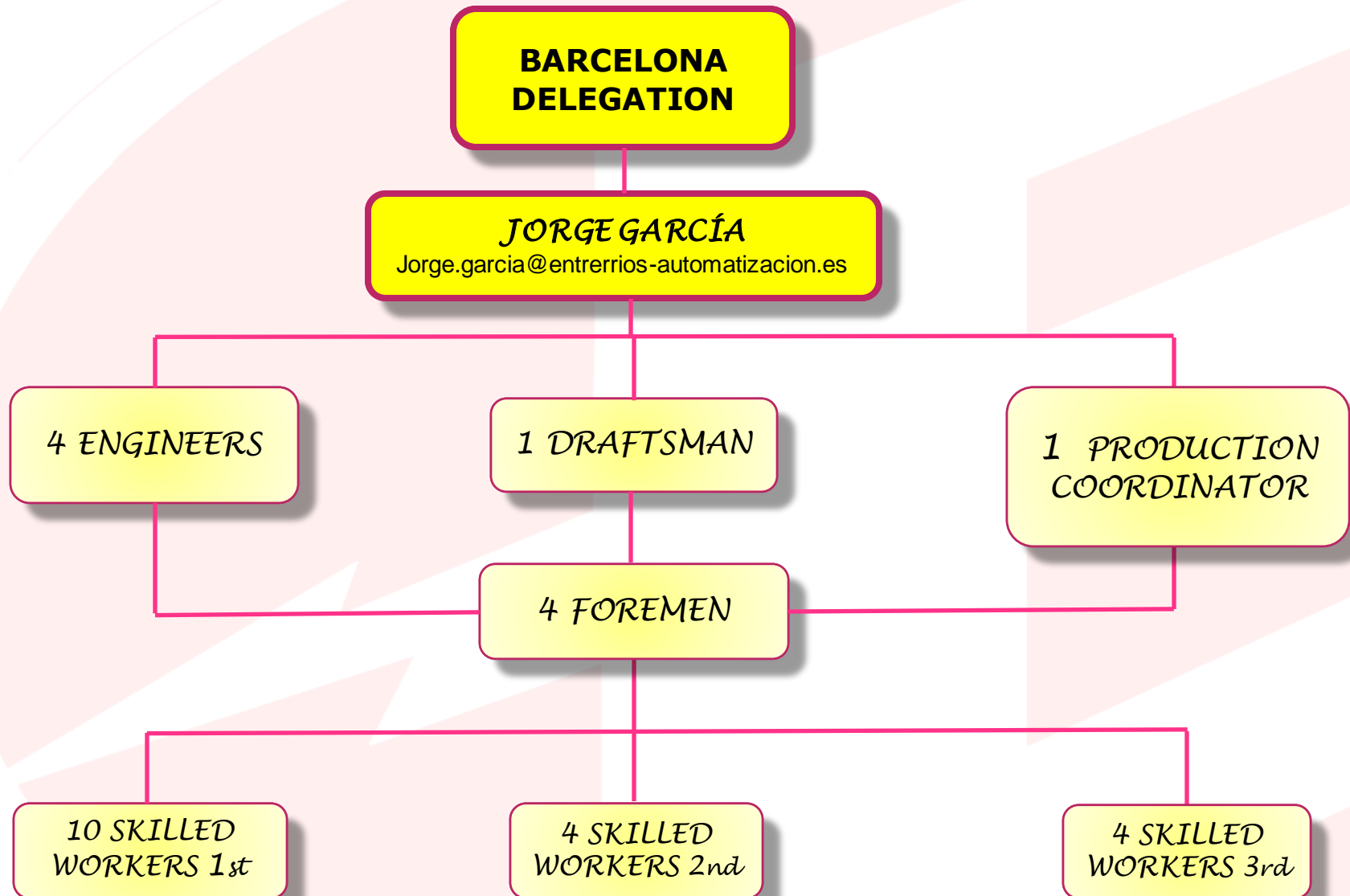


ORGANIZATION CHART





ORGANIZATION CHART

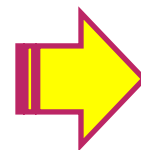




ORGANIZATION CHART

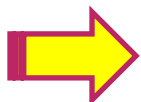


HEADQUARTERS



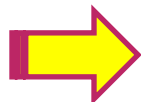
PEDROLA (ZARAGOZA)

BARCELONA OFFICE



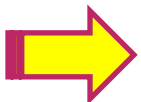
ESPARRAGUERA

NAVARRA OFFICE



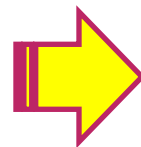
PAMPLONA

JAEN OFFICE



MARTOS

WORK SITES



OPEL - SEAT - CAF - ABB

VALEO- VW Navarra - RENAULT

TEKA - PLASTIC OMNIUM



CERTIFICATIONS



ISO 9001



CERTIFICADO N° 36876/18/AN
CERTIFICATE No.

Se certifica que el Sistema de Gestión de Calidad de
It is hereby certified that the Quality Management System of

ENTRERRIOS AUTOMATIZACIÓN, S.A.

POLIGONO EL PRADILLO - C/ ANETO 1, PARCELA 15. 50690, PEDROLA (ZARAGOZA), ESPAÑA

en las siguientes unidades operativas / in the following operational units

POLIGONO EL PRADILLO - C/ ANETO 1, PARCELA 15. 50690, PEDROLA (ZARAGOZA), ESPAÑA

cumple con la norma
is in compliance with the standard

ISO 9001:2015

para el siguiente campo de actividades / for the following field of activities

DISEÑO, DESARROLLO Y MONTAJE DE INSTALACIONES ELÉCTRICAS DE ALTA Y BAJA TENSIÓN; DISEÑO Y DESARROLLO DE CUADROS ELÉCTRICOS, CUADROS DE MANDO Y AUTOMATAS PROGRAMABLES PARA INSTALACIONES INDUSTRIALES; AUTOMATIZACIÓN Y ROBOTICA; MONTAJE E INSTALACIÓN DE FIBRA ÓPTICA DE RED Y DATOS; INSTALACIONES DE AIRE COMPRESIVO; INSTALACIONES FRÍO, CALOR Y CLIMATIZACIÓN; INSTALACIONES DE PROTECCIÓN CONTRA INCENDIOS; INSTALACIÓN DE TODO TIPO DE FLUIDOS; MECÁNICA INDUSTRIAL; MANTENIMIENTO INDUSTRIAL.

DISEÑO, DESENVOLUPAMENT I MUNTATGE D'INSTAL·LACIONS ELÈCTRIQUES EN ALTA I BAJA TENSIÓ; DISENY I DESENVOLUPAMENT DE QUADROS ELÈCTRICS, QUADRES DE COMANDAMENT I AUTOMATS PROGRAMABLES PER A INSTAL·LACIONS INDUSTRIALS; AUTOMATITZACIÓ I ROBOTICA; MUNTATGE I INSTAL·LACIÓ DE FIBRA ÒPTICA DE XARXA I DADIS; INSTAL·LACIONS D'AIRE COMPRESSAT; INSTAL·LACIONS FRIGID, CALOR I CLIMATITZACIÓ; INSTAL·LACIONS DE PROTECCIÓ CONTRA INCENDIS; INSTAL·LACIÓ DE TOT TIPUS DE FLUIDOS; MECÀNICA INDUSTRIAL; MANTENIMENT INDUSTRIAL.

DESIGN, DEVELOPMENT AND ASSEMBLY OF ELECTRICAL INSTALLATIONS IN HIGH AND LOW VOLTAGE; DESIGN AND DEVELOPMENT OF ELECTRICAL PANELS, CONTROL PANELS AND PROGRAMMABLE AUTOMATA FOR INDUSTRIAL INSTALLATIONS; AUTOMATION AND ROBOTICS; ASSEMBLY AND INSTALLATION OF FIBER OPTIC NETWORK AND DATA COMPRESSED AIR INSTALLATIONS; FACILITIES COOL, HEAT AND AIR CONDITIONING; FIRE PROTECTION FACILITIES; INSTALLATION OF ALL TYPES OF FLUIDS; INDUSTRIAL MECHANICS; INDUSTRIAL MAINTENANCE.

CONCEPCIÓ, DESENVOLUPAMENT I MUNTATGE D'INSTAL·LACIONS ELÈCTRIQUES EN ALTA I BAJA TENSIÓ; DISENY I DESENVOLUPAMENT DE QUADROS ELÈCTRICS, QUADRES DE COMANDAMENT I AUTOMATS PROGRAMABLES PER A INSTAL·LACIONS INDUSTRIALS; AUTOMATITZACIÓ I ROBOTICA; MUNTATGE I INSTAL·LACIÓ DE FIBRA ÒPTICA DE XARXA I DADIS; INSTAL·LACIONS D'AIRE COMPRESSAT; INSTAL·LACIONS FRIGID, CALOR I CLIMATITZACIÓ; INSTAL·LACIONS DE PROTECCIÓ CONTRA INCENDIS; INSTAL·LACIÓ DE TOT TIPUS DE FLUIDOS; MECÀNICA INDUSTRIAL; MANTENIMENT INDUSTRIAL.

La validez de este certificado depende de las auditorías semestrales / anuales y revisión completa cada tres años del Sistema de Gestión.
The validity of this certificate is dependent on an annual / six monthly audit and on a complete review, every three years, of the management system.
El uso y validez de este certificado está sujeto al cumplimiento de los documentos RINA. Reglamentos para la Certificación de Sistemas de Gestión de Calidad.
The use and validity of this certificate are subject to compliance with the RINA document: Rules for the certification of Quality Management Systems.

Primera emisión First Issue	Fecha de renovación de la decisión Renewal decision date	31.01.2019
Fecha de vencimiento Expiry Date	Fecha de revisión Revision date	31.01.2019

Organización con Sistema de Gestión certificado desde
Organization with Management System certified since: 12/02/2014

Alessandro Romel
Certification EMEA Region
Senior Director

RINA Services S.p.A.
Via Corsica 12 - 16128 Genova Italy



CISQ es la Federación Italiana de Entes de Certificación del Sistema de Gestión.
CISQ is the Italian Federation of management system certification bodies.

www.rina-certification.com



CERTIFICADO N° 36878/18/AN
CERTIFICATE No.

Se certifica que el Sistema de Gestión de Calidad de
It is hereby certified that the Quality Management System of

ENTRERRIOS FACILITY SERVICES, S.A.

POLIGONO EL PRADILLO, C/ ANETO 1, PARCELA 15. 50690 PEDROLA (ZARAGOZA), ESPAÑA

en las siguientes unidades operativas / in the following operational units

POLIGONO EL PRADILLO, C/ ANETO 1, PARCELA 15. 50690 PEDROLA (ZARAGOZA), ESPAÑA

cumple con la norma
is in compliance with the standard

ISO 9001:2015

para el siguiente campo de actividades / for the following field of activities

DISEÑO, DESARROLLO Y MONTAJE DE INSTALACIONES ELÉCTRICAS DE ALTA Y BAJA TENSIÓN; DISEÑO Y DESARROLLO DE CUADROS ELÉCTRICOS, CUADROS DE MANDO Y AUTOMATAS PROGRAMABLES PARA INSTALACIONES INDUSTRIALES; AUTOMATIZACIÓN Y ROBOTICA; MONTAJE E INSTALACIÓN DE FIBRA ÓPTICA DE RED Y DATOS; INSTALACIONES DE AIRE COMPRESIVO; INSTALACIONES FRÍO, CALOR Y CLIMATIZACIÓN; INSTALACIONES DE PROTECCIÓN CONTRA INCENDIOS; INSTALACIÓN DE TODO TIPO DE FLUIDOS; MECÁNICA INDUSTRIAL; MANTENIMIENTO INDUSTRIAL; OBRAS CIVILES Y ESTRUCTURAS METÁLICAS.

DISENY, DESENVOLUPAMENT I MUNTATGE D'INSTAL·LACIONS ELÈCTRIQUES EN ALTA I BAJA TENSIÓ; DISENY I DESENVOLUPAMENT DE QUADROS ELÈCTRICS, QUADRES DE COMANDAMENT I AUTOMATS PROGRAMABLES PER A INSTAL·LACIONS INDUSTRIALS; AUTOMATITZACIÓ I ROBOTICA; MUNTATGE I INSTAL·LACIÓ DE FIBRA ÒPTICA DE XARXA I DADIS; INSTAL·LACIONS D'AIRE COMPRESSAT; INSTAL·LACIONS FRIGID, CALOR I CLIMATITZACIÓ; INSTAL·LACIONS DE PROTECCIÓ CONTRA INCENDIS; INSTAL·LACIÓ DE TOT TIPUS DE FLUIDOS; MECÀNICA INDUSTRIAL; MANTENIMENT INDUSTRIAL; OBRAS CIVILS I ESTRUCTURES METÀL·LIQUES.

DESIGN, DEVELOPMENT AND ASSEMBLY OF ELECTRICAL INSTALLATIONS IN HIGH AND LOW VOLTAGE; DESIGN AND DEVELOPMENT OF ELECTRICAL PANELS, CONTROL PANELS AND PROGRAMMABLE AUTOMATA FOR INDUSTRIAL INSTALLATIONS; AUTOMATION AND ROBOTICS; ASSEMBLY AND INSTALLATION OF FIBER OPTIC NETWORK AND DATA COMPRESSED AIR INSTALLATIONS; FACILITIES COOL, HEAT AND AIR CONDITIONING; FIRE PROTECTION FACILITIES; INSTALLATION OF ALL TYPES OF FLUIDS; INDUSTRIAL MECHANICS; INDUSTRIAL MAINTENANCE; CIVIL WORK AND STEEL STRUCTURES.

DISENY, DESENVOLUPAMENT I MUNTATGE D'INSTAL·LACIONS ELÈCTRIQUES EN ALTA I BAJA TENSIÓ; DISENY I DESENVOLUPAMENT DE QUADROS ELÈCTRICS, QUADRES DE COMANDAMENT I AUTOMATS PROGRAMABLES PER A INSTAL·LACIONS INDUSTRIALS; AUTOMATITZACIÓ I ROBOTICA; MUNTATGE I INSTAL·LACIÓ DE FIBRA ÒPTICA DE XARXA I DADIS; INSTAL·LACIONS D'AIRE COMPRESSAT; INSTAL·LACIONS FRIGID, CALOR I CLIMATITZACIÓ; INSTAL·LACIONS DE PROTECCIÓ CONTRA INCENDIS; INSTAL·LACIÓ DE TOT TIPUS DE FLUIDOS; MECÀNICA INDUSTRIAL; MANTENIMENT INDUSTRIAL; OBRAS CIVILS I ESTRUCTURES METÀL·LIQUES.

La validez de este certificado depende de las auditorías semestrales / anuales y revisión completa cada tres años del Sistema de Gestión.
The validity of this certificate is dependent on an annual / six monthly audit and on a complete review, every three years, of the management system.
El uso y validez de este certificado está sujeto al cumplimiento de los documentos RINA. Reglamentos para la Certificación de Sistemas de Gestión de Calidad.
The use and validity of this certificate are subject to compliance with the RINA document: Rules for the certification of Quality Management Systems.

Primera emisión First Issue	Fecha de renovación de la decisión Renewal decision date	31.01.2019
Fecha de vencimiento Expiry Date	Fecha de revisión Revision date	31.01.2019

Organización con Sistema de Gestión certificado desde
Organization with Management System certified since: 12/02/2014

Alessandro Romel
Certification EMEA Region
Senior Director

RINA Services S.p.A.
Via Corsica 12 - 16128 Genova Italy



CISQ es la Federación Italiana de Entes de Certificación del Sistema de Gestión.
CISQ is the Italian Federation of management system certification bodies.

www.rina-certification.com



CERTIFICATIONS



ISO 14001



CERTIFICADO N°
CERTIFICATE No. EMS-7266/AN

Se certifica que el Sistema de Gestión Ambiental de
It is hereby certified that the Environmental Management System of

ENTRERRIOS AUTOMATIZACIÓN, S.A.

POLIGONO EL PRADILLO - C/ ANETO 1, PARCELA 15. 50690 PEDROLA (ZARAGOZA), ESPAÑA

en las siguientes unidades operativas / in the following operational units

POLIGONO EL PRADILLO - C/ ANETO 1, PARCELA 15. 50690 PEDROLA (ZARAGOZA), ESPAÑA

Cumple con la norma
Is in compliance with the standard
ISO 14001:2015

Para el siguiente campo de actividades / For the following field(s) of activities

DISEÑO, DESARROLLO Y MONTAJE DE INSTALACIONES ELÉCTRICAS DE ALTA Y BAJA TENSIÓN; DISEÑO Y DESARROLLO DE CUADROS ELÉCTRICOS, CUADROS DE MANDO Y AUTOMATAS PROGRAMABLES PARA INSTALACIONES INDUSTRIALES; AUTOMATIZACIÓN Y ROBOTICA; MONTAJE E INSTALACIÓN DE FIBRA ÓPTICA DE RED Y DATOS; INSTALACIONES DE AIRE COMPRIMIDO; INSTALACIONES FRÍO, CALOR Y CLIMATIZACIÓN; INSTALACIONES DE PROTECCIÓN CONTRA INCENDIOS; INSTALACIÓN DE TODO TIPO DE FLUIDOS; MECÁNICA INDUSTRIAL; MANTENIMIENTO INDUSTRIAL.
DISEN, DEVELOPPEMENT ET MONTAGE D'INSTALLATIONS ÉLECTRIQUES EN ALTA ET BAJA TENSION; DISEN ET DEVELOPPEMENT DE QUADRES ÉLECTRIQUES, QUADRES DE COMMANDEMENT AUTOMATISÉS PROGRAMABLES POUR INSTALLATIONS INDUSTRIELLES; AUTOMATISATION ET ROBOTIQUE; MONTAGE ET INSTALLATION DE FIBRE OPTIQUE DE RÉSEAU ET DE DONNÉES; INSTALLATIONS D'AIR COMPRIMÉ; INSTALLATIONS DE PROTECTION CONTRE INCENDIE; INSTALLATION DE TOUS TYPES DE FLUIDES; MÉCANIQUE INDUSTRIELLE; MAINTENANCE INDUSTRIELLE.
DESIGN, DEVELOPMENT AND ASSEMBLY OF ELECTRICAL INSTALLATIONS IN HIGH AND LOW VOLTAGE; DESIGN AND DEVELOPMENT OF ELECTRICAL PANELS, CONTROL PANELS AND PROGRAMMABLE AUTOMATA FOR INDUSTRIAL INSTALLATIONS; AUTOMATION AND ROBOTICS; ASSEMBLY AND INSTALLATION OF FIBER OPTIC NETWORK AND DATA; COMPRESSED AIR INSTALLATIONS; FACILITIES COLD, HEAT AND AIR CONDITIONING; FIRE PROTECTION FACILITIES; INSTALLATION OF ALL TYPES OF FLUIDS; INDUSTRIAL MECHANICS; INDUSTRIAL MAINTENANCE; CONCEPTION, DEVELOPMENT ET MONTAGE D'INSTALLATIONS ÉLECTRIQUES EN HAUTE ET BASSE TENSION; CONCEPTION ET DÉVELOPPEMENT DE PANNEAUX ÉLECTRIQUES, DE PANNEAUX DE COMMANDEMENT AUTOMATISÉS PROGRAMABLES POUR INSTALLATIONS INDUSTRIELLES; AUTOMATISATION ET ROBOTIQUE; ASSEMBLY AND INSTALLATION OF FIBER OPTIC NETWORK AND DATA; COMPRESSED AIR INSTALLATIONS; FACILITIES COLD, HEAT AND AIR CONDITIONING; FIRE PROTECTION FACILITIES; INSTALLATION OF ALL TYPES OF FLUIDS; INDUSTRIAL MECHANICS; INDUSTRIAL MAINTENANCE.

IAP-25
IAP-10
IAP-19
IAP-34

La validez de este certificado depende de las auditorías semestrales / anuales y revisión completa cada tres años del Sistema de Gestión.
The validity of this certificate is dependent on an annual / six monthly audit and on a complete review, every three years, of the management system.
El uso y validez de este certificado está sujeto al cumplimiento de los documentos RINA. Reglamento para la Certificación de Sistemas de Gestión Ambiental.
The use and the validity of this certificate are subject to compliance with the RINA document: Rules for the Certification of Environmental Management Systems.

Primera emisión First issue	04.06.2018	Fecha de renovación de la decisión Renewal decision date	31.01.2019
Fecha de vencimiento Expiry date	11.02.2022	Fecha de revisión Revision date	31.01.2019

Organización con Sistema de Gestión certificado desde:
Organization with Management System certified since: 12/02/2016

Alessandro Romel
Certification EMEA Region
Senior Director

RINA Services S.p.A.



CISQ es la Federación Italiana de Entes de Certificación del Sistema de Gestión.
CISQ is the Italian Federation of management system Certification Bodies.



CERTIFICADO N°
CERTIFICATE No. EMS-7267/AN

Se certifica que el Sistema de Gestión Ambiental de
It is hereby certified that the Environmental Management System of

ENTRERRIOS FACILITY SERVICES, S.A.

POLIGONO EL PRADILLO, C/ ANETO 1, PARCELA 15. 50690 PEDROLA (ZARAGOZA), ESPAÑA

en las siguientes unidades operativas / in the following operational units

POLIGONO EL PRADILLO, C/ ANETO 1, PARCELA 15. 50690 PEDROLA (ZARAGOZA), ESPAÑA

Cumple con la norma
Is in compliance with the standard
ISO 14001:2015

Para el siguiente campo de actividades / For the following field(s) of activities

DISEÑO, DESARROLLO Y MONTAJE DE INSTALACIONES ELÉCTRICAS DE ALTA Y BAJA TENSIÓN; DISEÑO Y DESARROLLO DE CUADROS ELÉCTRICOS, CUADROS DE MANDO Y AUTOMATAS PROGRAMABLES PARA INSTALACIONES INDUSTRIALES; AUTOMATIZACIÓN Y ROBOTICA; MONTAJE E INSTALACIÓN DE FIBRA ÓPTICA DE RED Y DATOS; INSTALACIONES DE AIRE COMPRIMIDO; INSTALACIONES FRÍO, CALOR Y CLIMATIZACIÓN; INSTALACIONES DE PROTECCIÓN CONTRA INCENDIOS; INSTALACIÓN DE TODO TIPO DE FLUIDOS; MECÁNICA INDUSTRIAL; MANTENIMIENTO INDUSTRIAL; OBRAS CIVILES Y ESTRUCTURAS METÁLICAS.
DISEN, DEVELOPPEMENT ET MONTAGE D'INSTALLATIONS ÉLECTRIQUES EN ALTA ET BAJA TENSION; DISEN ET DEVELOPPEMENT DE QUADRES ÉLECTRIQUES, QUADRES DE COMMANDEMENT AUTOMATISÉS PROGRAMABLES POUR INSTALLATIONS INDUSTRIELLES; AUTOMATISATION ET ROBOTIQUE; MONTAGE ET INSTALLATION DE FIBRE OPTIQUE DE RÉSEAU ET DE DONNÉES; INSTALLATIONS D'AIR COMPRIMÉ; INSTALLATIONS DE PROTECTION CONTRE INCENDIE; INSTALLATION DE TOUS TYPES DE FLUIDES; MÉCANIQUE INDUSTRIELLE; MAINTENANCE INDUSTRIELLE; OUVRES CIVILES ET STRUCTURES MÉTALLIQUES.
DESIGN, DEVELOPMENT AND ASSEMBLY OF ELECTRICAL INSTALLATIONS IN HIGH AND LOW VOLTAGE; DESIGN AND DEVELOPMENT OF ELECTRICAL PANELS, CONTROL PANELS AND PROGRAMMABLE AUTOMATA FOR INDUSTRIAL INSTALLATIONS; AUTOMATION AND ROBOTICS; ASSEMBLY AND INSTALLATION OF FIBER OPTIC NETWORK AND DATA; COMPRESSED AIR INSTALLATIONS; FACILITIES COLD, HEAT AND AIR CONDITIONING; FIRE PROTECTION FACILITIES; INSTALLATION OF ALL TYPES OF FLUIDS; INDUSTRIAL MECHANICS; INDUSTRIAL MAINTENANCE; CIVIL WORKS AND STEEL STRUCTURES.

IAP-25
IAP-17
IAP-10
IAP-19
IAP-34

La validez de este certificado depende de las auditorías semestrales / anuales y revisión completa cada tres años del Sistema de Gestión.
The validity of this certificate is dependent on an annual / six monthly audit and on a complete review, every three years, of the management system.
El uso y validez de este certificado está sujeto al cumplimiento de los documentos RINA. Reglamento para la Certificación de Sistemas de Gestión Ambiental.
The use and the validity of this certificate are subject to compliance with the RINA document: Rules for the Certification of Environmental Management Systems.

Primera emisión First issue	04.06.2018	Fecha de renovación de la decisión Renewal decision date	31.01.2019
Fecha de vencimiento Expiry date	11.02.2022	Fecha de revisión Revision date	31.01.2019

Organización con Sistema de Gestión certificado desde:
Organization with Management System certified since: 12/02/2016

Alessandro Romel
Certification EMEA Region
Senior Director

RINA Services S.p.A.



CISQ es la Federación Italiana de Entes de Certificación del Sistema de Gestión.
CISQ is the Italian Federation of management system Certification Bodies.



CERTIFICATIONS



ISO 45001



CERTIFICADO N° CERTIFICATE No. OHS-3407

Se certifica que el Sistema de Seguridad y Salud Ocupacional de
It is hereby certified that the Occupational Health and Safety Management System of

ENTRERRIOS AUTOMATIZACIÓN, S.A.

POL. PRADILLO, C/ ANETO, PARCELA 15, PEDROLA (ZARAGOZA), ESPAÑA

en las siguientes unidades operativas / in the following operational units

POL. PRADILLO, C/ ANETO, PARCELA 15, PEDROLA (ZARAGOZA), ESPAÑA

Cumple con la norma
Is in compliance with the standard
ISO 45001:2018

Para el siguiente campo de actividades / For the following field(s) of activities

DISEÑO, DESARROLLO Y MONTAJE DE INSTALACIONES ELÉCTRICAS EN ALTA Y BAJA TENSIÓN, DISEÑO Y DESARROLLO DE CUADROS ELÉCTRICOS, CUADROS DE MANDO Y AUTOMATAS PROGRAMABLES PARA INSTALACIONES INDUSTRIALES, MONTAJE E INSTALACIÓN DE FIBRA ÓPTICA DE RED Y DATOS, INSTALACIONES DE AIRE COMPRESIVO, INSTALACIONES FRÍO, CALOR Y CLIMATIZACIÓN, INSTALACIONES DE PROTECCIÓN CONTRA INCENDIOS, INSTALACIÓN DE TODO TIPO DE FLUIDOS, MECÁNICA INDUSTRIAL, MANTENIMIENTO INDUSTRIAL.

DESIGN, DEVELOPMENT AND ASSEMBLY OF ELECTRICAL INSTALLATIONS IN HIGH AND LOW VOLTAGE, DESIGN AND DEVELOPMENT OF ELECTRICAL PANELS, CONTROL PANELS AND PROGRAMMABLE AUTOMATA FOR INDUSTRIAL INSTALLATIONS, ASSEMBLY AND INSTALLATION OF FIBER OPTIC NETWORK AND DATA, COMPRESSED AIR INSTALLATIONS, FACILITIES COLD, HEAT AND AIR CONDITIONING, FIRE PROTECTION FACILITIES, INSTALLATION OF ALL TYPES OF FLUIDS, INDUSTRIAL MECHANICS, INDUSTRIAL MAINTENANCE.

DESIGN, DÉVELOPPEMENT ET MONTAGE D'INSTALLATIONS ÉLECTRIQUES EN HAUTE ET EN BASSE TENSION, DESIGN ET DÉVELOPPEMENT DE PANNEAUX ÉLECTRIQUES, DE PANNEAUX DE CONTRÔLE ET D'AUTOMATES PROGRAMMABLES POUR INSTALLATIONS INDUSTRIELLES, ASSEMBLAGE ET INSTALLATION DE RÉSEAU DE FIBRES OPTIQUES ET DE DONNÉES, INSTALLATIONS D'AIR COMPRIMÉ, INSTALLATIONS DE FROID, DE CHALEUR ET DE CLIMATISATION, INSTALLATIONS DE PROTECTION CONTRE L'INCENDIE, INSTALLATION DE TOUTS TYPES DE FLUIDES, MÉCANIQUE INDUSTRIELLE, MAINTENANCE INDUSTRIELLE.

El uso y validez de este certificado está sujeto al cumplimiento de los documentos RINA: Reglamento para la Certificación de Sistemas de Seguridad y Salud Ocupacional
The use and validity of this certificate are subject to compliance with the RINA document: Rules for the Certification of Occupational Health and Safety Management Systems

La validez de este certificado depende de las auditorías semestrales / anuales y revisión completa cada tres años del Sistema de Gestión
The validity of this certificate is dependent on an annual / six monthly audit and on a complete review, every three years, of the management system

Primera emisión
First Issue 08.08.2018

Fecha de vencimiento
Expiry Date 07.08.2021

Fecha de revisión
Revision date 08.08.2018

Alessandro Romel
Certification EMEA Region
Senior Director

RINA Services S.p.A.
Via Corsica 12 - 16128 Genova Italy



SCR N° 003 F

Registry of EA, IAF and ILAC
Mutual Recognition Agreements



CISQ is a member of
IQNet
The International Certification Network
www.iqnet-certification.com

IQNet, the association of the world's first class certification bodies, is the largest provider of management system Certifications in the world.
IQNet is composed of more than 30 bodies and counts over 110 subsidiaries all over the globe.

Para información relacionada
con la validez del certificado,
puede consultarse el sitio
www.rina.org

For information concerning
validity of the certificate, you
can visit the site
www.rina.org

IAF-34
IAF-10
IAF-20



CISQ es la Federazione Italiana de Enti de Certification del Sistema de Gestión
CISQ is the Italian Federation of management system Certification Bodies



CERTIFICADO N° CERTIFICATE No. OHS-3406

Se certifica que el Sistema de Seguridad y Salud Ocupacional de
It is hereby certified that the Occupational Health and Safety Management System of

ENTRERRIOS FACILITY SERVICES, S.A.

POL. PRADILLO, C/ ANETO, PARCELA 15, PEDROLA (ZARAGOZA), ESPAÑA

en las siguientes unidades operativas / in the following operational units

POL. PRADILLO, C/ ANETO, PARCELA 15, PEDROLA (ZARAGOZA), ESPAÑA

Cumple con la norma
Is in compliance with the standard
ISO 45001:2018

Para el siguiente campo de actividades / For the following field(s) of activities

DISEÑO, DESARROLLO Y MONTAJE DE INSTALACIONES ELÉCTRICAS EN ALTA Y BAJA TENSIÓN, DISEÑO Y DESARROLLO DE CUADROS ELÉCTRICOS, CUADROS DE MANDO Y AUTOMATAS PROGRAMABLES PARA INSTALACIONES INDUSTRIALES, MONTAJE E INSTALACIÓN DE FIBRA ÓPTICA DE RED Y DATOS, INSTALACIONES DE AIRE COMPRESIVO, INSTALACIONES FRÍO, CALOR Y CLIMATIZACIÓN, INSTALACIONES DE PROTECCIÓN CONTRA INCENDIOS, INSTALACIÓN DE TODO TIPO DE FLUIDOS, MECÁNICA INDUSTRIAL, MANTENIMIENTO INDUSTRIAL.

DESIGN, DEVELOPMENT AND ASSEMBLY OF ELECTRICAL INSTALLATIONS IN HIGH AND LOW VOLTAGE, DESIGN AND DEVELOPMENT OF ELECTRICAL PANELS, CONTROL PANELS AND PROGRAMMABLE AUTOMATA FOR INDUSTRIAL INSTALLATIONS, ASSEMBLY AND INSTALLATION OF FIBER OPTIC NETWORK AND DATA, COMPRESSED AIR INSTALLATIONS, FACILITIES COLD, HEAT AND AIR CONDITIONING, FIRE PROTECTION FACILITIES, INSTALLATION OF ALL TYPES OF FLUIDS, INDUSTRIAL MECHANICS, INDUSTRIAL MAINTENANCE.

DESIGN, DÉVELOPPEMENT ET MONTAGE D'INSTALLATIONS ÉLECTRIQUES EN HAUTE ET EN BASSE TENSION, DESIGN ET DÉVELOPPEMENT DE PANNEAUX ÉLECTRIQUES, DE PANNEAUX DE CONTRÔLE ET D'AUTOMATES PROGRAMMABLES POUR INSTALLATIONS INDUSTRIELLES, ASSEMBLAGE ET INSTALLATION DE RÉSEAU DE FIBRES OPTIQUES ET DE DONNÉES, INSTALLATIONS D'AIR COMPRIMÉ, INSTALLATIONS DE FROID, DE CHALEUR ET DE CLIMATISATION, INSTALLATIONS DE PROTECTION CONTRE L'INCENDIE, INSTALLATION DE TOUTS TYPES DE FLUIDES, MÉCANIQUE INDUSTRIELLE, MAINTENANCE INDUSTRIELLE.

El uso y validez de este certificado está sujeto al cumplimiento de los documentos RINA: Reglamento para la Certificación de Sistemas de Seguridad y Salud Ocupacional
The use and validity of this certificate are subject to compliance with the RINA document: Rules for the Certification of Occupational Health and Safety Management Systems

La validez de este certificado depende de las auditorías semestrales / anuales y revisión completa cada tres años del Sistema de Gestión
The validity of this certificate is dependent on an annual / six monthly audit and on a complete review, every three years, of the management system

Primera emisión
First Issue 08.08.2018

Fecha de vencimiento
Expiry Date 07.08.2021

Fecha de revisión
Revision date 08.08.2018

Alessandro Romel
Certification EMEA Region
Senior Director

RINA Services S.p.A.
Via Corsica 12 - 16128 Genova Italy



SCR N° 003 F

Registry of EA, IAF and ILAC
Mutual Recognition Agreements



CISQ is a member of
IQNet
The International Certification Network
www.iqnet-certification.com

IQNet, the association of the world's first class certification bodies, is the largest provider of management system Certifications in the world.
IQNet is composed of more than 30 bodies and counts over 110 subsidiaries all over the globe.

Para información relacionada
con la validez del certificado,
puede consultarse el sitio
www.rina.org

For information concerning
validity of the certificate, you
can visit the site
www.rina.org

IAF-34
IAF-10
IAF-20



CISQ es la Federazione Italiana de Enti de Certification del Sistema de Gestión
CISQ is the Italian Federation of management system Certification Bodies



CERTIFICATIONS



ISO 50001



CERTIFICADO N. CERTIFICATE No.

SE CERTIFICA QUE EL SISTEMA DE GESTIÓN PARA LA ENERGÍA DE
IT IS HEREBY CERTIFIED THAT THE ENERGY MANAGEMENT SYSTEM OF

ENTRERRIOS AUTOMATIZACIÓN, S.A

POLIGONO EL PRADILLO - C/ ANETO 1, PARCELA 15. 50690, PEDROLA (ZARAGOZA), ESPAÑA

EN LAS SIGUIENTES UNIDADES OPERATIVAS / IN THE FOLLOWING OPERATIONAL UNITS

POLIGONO EL PRADILLO - C/ ANETO 1, PARCELA 15. 50690, PEDROLA (ZARAGOZA), ESPAÑA

CUMPLE CON LA NORMA / IS IN COMPLIANCE WITH THE STANDARD

ISO 50001:2011

PARA EL SIGUIENTE CAMPO DE ACTIVIDADES / FOR THE FOLLOWING FIELD(S) OF ACTIVITIES

DISEÑO, DESARROLLO Y MONTAJE DE INSTALACIONES ELÉCTRICAS EN ALTA Y BAJA TENSIÓN. DISEÑO Y DESARROLLO DE CUADROS ELÉCTRICOS, CUADROS DE MANDO Y AUTOMATAS PROGRAMABLES PARA INSTALACIONES INDUSTRIALES. MONTAJE E INSTALACIÓN DE FIBRA ÓPTICA DE RED Y DATOS. INSTALACIONES DE AIRE COMPRESO. INSTALACIONES FRÍO, CALOR Y CLIMATIZACIÓN. INSTALACIONES DE PROTECCIÓN CONTRA INCENDIOS. INSTALACIÓN DE TODO TIPO DE FLUIDOS. MECÁNICA INDUSTRIAL. MANTENIMIENTO INDUSTRIAL.

DESIGN, DEVELOPMENT AND ASSEMBLY OF ELECTRICAL INSTALLATIONS IN HIGH AND LOW VOLTAGE. DESIGN AND DEVELOPMENT OF ELECTRICAL PANELS, CONTROL PANELS AND PROGRAMMABLE AUTOMATA FOR INDUSTRIAL INSTALLATIONS. ASSEMBLY AND INSTALLATION OF FIBER OPTIC NETWORK AND DATA. COMPRESSED AIR INSTALLATIONS. FACILITIES COOL, HEAT AND AIR CONDITIONING. FIRE PROTECTION FACILITIES. INSTALLATION OF ALL TYPES OF FLUIDS. INDUSTRIAL MECHANICS. INDUSTRIAL MAINTENANCE.

DESIGN, DÉVELOPPEMENT ET MONTAGE D'INSTALLATIONS ÉLECTRIQUES EN HAUTE ET EN BASSE TENSION. DESIGN ET DÉVELOPPEMENT DE PANNEAUX ÉLECTRIQUES, DE PANNEAUX DE CONTRÔLE ET D'AUTOMATES PROGRAMMABLES POUR INSTALLATIONS INDUSTRIELLES. ASSEMBLAGE ET INSTALLATION DE RÉSEAU DE FIBRES OPTIQUES ET DE DONNÉES. INSTALLATIONS D'AIR COMPRIMÉ. INSTALLATIONS DE FROID, DE CHALEUR ET DE CLIMATISATION. INSTALLATIONS DE PROTECTION CONTRE L'INCENDIE. INSTALLATION DE TOUTS TYPES DE FLUIDES. MÉCANIQUE INDUSTRIELLE. MAINTIENANCE INDUSTRIELLE.

La validez de este certificado depende de las auditorías semestrales / anuales y revisión completa cada tres años del Sistema de Gestión.
The validity of this certificate is dependent on an annual/monthly audit and on a complete review, every three years, of the management system.
Et l'usage et la validité de ce certificat sont soumis à la conformité avec le document RINA, Règlement pour la Certification de Systèmes de Gestion de l'Énergie.
The use and validity of this certificate are subject to compliance with the RINA document: Rules for the Certification of Energy Management Systems.

Primera emisión
First Issue

20.07.2018

Fecha de vencimiento
Expiry Date

19.07.2021

Fecha de revisión
Revision date

20.07.2018

Alessandro Romel
Certification EMEA Region
Senior Director

RINA Services S.p.A.
Via Corsica 12 - 16128 Genova (Italy)



SGE Nº 008 H

Registry of EA, UK and IAC
Notified Designated Approvals



CISQ es la Federación Italiana de Entes de
Certificación del Sistema de Gestión
CISQ is the Italian Federation of
management system Certification Bodies

Doc-00000000-00000



CERTIFICADO N. CERTIFICATE No.

SE CERTIFICA QUE EL SISTEMA DE GESTIÓN PARA LA ENERGÍA DE
IT IS HEREBY CERTIFIED THAT THE ENERGY MANAGEMENT SYSTEM OF

ENTRERRIOS FACILITY SERVICES, S.A

POLIGONO EL PRADILLO, C/ ANETO 1, PARCELA 15. 50690 PEDROLA (ZARAGOZA), ESPAÑA

EN LAS SIGUIENTES UNIDADES OPERATIVAS / IN THE FOLLOWING OPERATIONAL UNITS

POLIGONO EL PRADILLO, C/ ANETO 1, PARCELA 15. 50690 PEDROLA (ZARAGOZA), ESPAÑA

CUMPLE CON LA NORMA / IS IN COMPLIANCE WITH THE STANDARD

ISO 50001:2011

PARA EL SIGUIENTE CAMPO DE ACTIVIDADES / FOR THE FOLLOWING FIELD(S) OF ACTIVITIES

DISEÑO, DESARROLLO Y MONTAJE DE INSTALACIONES ELÉCTRICAS EN ALTA Y BAJA TENSIÓN. DISEÑO Y DESARROLLO DE CUADROS ELÉCTRICOS, CUADROS DE MANDO Y AUTOMATAS PROGRAMABLES PARA INSTALACIONES INDUSTRIALES. MONTAJE E INSTALACIÓN DE FIBRA ÓPTICA DE RED Y DATOS. INSTALACIONES DE AIRE COMPRESO. INSTALACIONES FRÍO, CALOR Y CLIMATIZACIÓN. INSTALACIONES DE PROTECCIÓN CONTRA INCENDIOS. INSTALACIÓN DE TODO TIPO DE FLUIDOS. MECÁNICA INDUSTRIAL. MANTENIMIENTO INDUSTRIAL.

DESIGN, DEVELOPMENT AND ASSEMBLY OF ELECTRICAL INSTALLATIONS IN HIGH AND LOW VOLTAGE. DESIGN AND DEVELOPMENT OF ELECTRICAL PANELS, CONTROL PANELS AND PROGRAMMABLE AUTOMATA FOR INDUSTRIAL INSTALLATIONS. ASSEMBLY AND INSTALLATION OF FIBER OPTIC NETWORK AND DATA. COMPRESSED AIR INSTALLATIONS. FACILITIES COOL, HEAT AND AIR CONDITIONING. FIRE PROTECTION FACILITIES. INSTALLATION OF ALL TYPES OF FLUIDS. INDUSTRIAL MECHANICS. INDUSTRIAL MAINTENANCE.

DESIGN, DÉVELOPPEMENT ET MONTAGE D'INSTALLATIONS ÉLECTRIQUES EN HAUTE ET EN BASSE TENSION. DESIGN ET DÉVELOPPEMENT DE PANNEAUX ÉLECTRIQUES, DE PANNEAUX DE CONTRÔLE ET D'AUTOMATES PROGRAMMABLES POUR INSTALLATIONS INDUSTRIELLES. ASSEMBLAGE ET INSTALLATION DE RÉSEAU DE FIBRES OPTIQUES ET DE DONNÉES. INSTALLATIONS D'AIR COMPRIMÉ. INSTALLATIONS DE FROID, DE CHALEUR ET DE CLIMATISATION. INSTALLATIONS DE PROTECTION CONTRE L'INCENDIE. INSTALLATION DE TOUTS TYPES DE FLUIDES. MÉCANIQUE INDUSTRIELLE. MAINTIENANCE INDUSTRIELLE.

La validez de este certificado depende de las auditorías semestrales / anuales y revisión completa cada tres años del Sistema de Gestión.
The validity of this certificate is dependent on an annual/monthly audit and on a complete review, every three years, of the management system.
Et l'usage et la validité de ce certificat sont soumis à la conformité avec le document RINA, Règlement pour la Certification de Systèmes de Gestion de l'Énergie.
The use and validity of this certificate are subject to compliance with the RINA document: Rules for the Certification of Energy Management Systems.

Primera emisión
First Issue

20.07.2018

Fecha de vencimiento
Expiry Date

19.07.2021

Fecha de revisión
Revision date

20.07.2018

Alessandro Romel
Certification EMEA Region
Senior Director

RINA Services S.p.A.
Via Corsica 12 - 16128 Genova (Italy)



CISQ es la Federación Italiana de Entes de
Certificación del Sistema de Gestión
CISQ is the Italian Federation of
management system Certification Bodies

Doc-00000000-00000



CERTIFICACIONES



— **IO Net** —
THE INTERNATIONAL ORGANIZATION OF
www.io-net-certification.com

2004



EN 1090



NOTIFIED BODY No 2028
RINA SIMTEX-OC
Bucuresti, 4D Leonte Anastasievici St.,
5th district, ROMANIA

acreditat pentru
CERTIFICARE



SR EN ISO/CEI 17065:2013
CERTIFICAT DE ACREDITARE
ON 072

CERTIFICATE OF CONFORMITY OF FACTORY PRODUCTION CONTROL

No. 2028 - CPR - 465

In compliance with Regulation (EU) No 305/2011 of the European Parliament and of the Council of 9 March 2011 (the Construction Products Regulation or CPR), this certificate applies to the construction product

STEEL STRUCTURAL COMPONENTS

Execution class
up to EXC 3, according EN 1090-2

Method for declaration of the component properties
3a, 3b according Table A.1 - EN 1090-1

Intended use: Structural use in any type of constructions.

placed on the market under the name of

ENTRERRIOS FACILITY SERVICES SA
Poligono El Pradillo, C/Aneto 1, Parcela 15, 50690 PEDROLA (ZARAGOZA), ESPANA

and produced in the manufacturing plant:

ENTRERRIOS FACILITY SERVICES SA
Poligono El Pradillo, C/Aneto 1, Parcela 15, 50690 PEDROLA (ZARAGOZA), ESPANA

This certificate attests that all provisions concerning the assessment and verification of constancy of performance described in Annex ZA of the standard

EN 1090-1:2009+A1:2011

under system 2+ are applied and that

the factory production control is assessed to be in conformity with the applicable requirements

This certificate was first issued on 27.11.2018
Date of the next surveillance is until 27.11.2019

The certificate remains valid as long as neither the harmonised standard, the construction product, the AVCP methods nor the manufacturing conditions in the plant are modified significantly, unless suspended or withdrawn by the notified product certification body.

Eng. Mircea Vasile ZEGREAN

Bucuresti, Date: 27.11.2018

DIRECTOR OF PRODUCT CERTIFICATION DEPARTMENT





CERTIFICATIONS



MRS 10000



CERTIFICATE No. MRS-52/18

IT IS HEREBY CERTIFIED THAT THE SOCIAL RESPONSABILITY MANAGEMENT SYSTEM OF

ENTRERRIOS AUTOMATIZACIÓN, S.A

POL. PRADILLO, C/ ANETO, PARCELA 15, PEDROLA (ZARAGOZA) - SPAIN

IN THE FOLLOWING OPERATIONAL UNITS

POL. PRADILLO, C/ ANETO, PARCELA 15, PEDROLA (ZARAGOZA) - SPAIN

IS IN COMPLIANCE WITH THE STANDARD

MRS 10000:2018

FOR THE FOLLOWING FIELD(S) OF ACTIVITIES

DISEÑO, DESARROLLO Y MONTAJE DE INSTALACIONES ELÉCTRICAS EN ALTA Y BAJA TENSIÓN. DISEÑO Y DESARROLLO DE CUADROS ELÉCTRICOS, CUADROS DE MANDO Y AUTOMATAS PROGRAMABLES PARA INSTALACIONES INDUSTRIALES. MONTAJE E INSTALACIÓN DE FIBRA ÓPTICA DE RED Y DATOS. INSTALACIONES DE AIRE COMPRIMIDO. INSTALACIONES FRÍO, CALOR Y CLIMATIZACIÓN. INSTALACIONES DE PROTECCIÓN CONTRA INCENDIOS. INSTALACIÓN DE TODO TIPO DE FLUIDOS. MECÁNICA INDUSTRIAL. MANTENIMIENTO INDUSTRIAL.

DESIGN, DEVELOPMENT AND ASSEMBLY OF ELECTRICAL INSTALLATIONS IN HIGH AND LOW VOLTAGE. DESIGN AND DEVELOPMENT OF ELECTRICAL PANELS, CONTROL PANELS AND PROGRAMMABLE AUTOMATA FOR INDUSTRIAL INSTALLATIONS. ASSEMBLY AND INSTALLATION OF FIBER OPTIC NETWORK AND DATA. COMPRESSED AIR INSTALLATIONS. FACILITIES COLD, HEAT AND AIR CONDITIONING. FIRE PROTECTION FACILITIES. INSTALLATION OF ALL TYPES OF FLUIDS. INDUSTRIAL MECHANICS. INDUSTRIAL MAINTENANCE.

CONCEPTION, DÉVELOPPEMENT ET MONTAGE D'INSTALLATIONS ÉLECTRIQUES EN HAUTE ET BASSE TENSION. CONCEPTION ET DÉVELOPPEMENT DE PANNEAUX ÉLECTRIQUES, DE PANNEAUX DE CONTRÔLE ET D'AUTOMATES PROGRAMMABLES POUR INSTALLATIONS INDUSTRIELLES. ASSEMBLAGE ET INSTALLATION DE RÉSEAU DE FIBRES OPTIQUES ET DE DONNÉES. INSTALLATIONS D'AIR COMPRIMÉ. INSTALLATIONS DE FROID, DE CHALEUR ET DE CLIMATISATION. INSTALLATIONS DE PROTECTION CONTRE L'INCENDIE. INSTALLATION DE TOUS TYPES DE FLUIDES. MÉCANIQUE INDUSTRIELLE. MAINTENANCE INDUSTRIELLE.

DISSENY, DESENVOLUPAMENT I MUNTATGE D'INSTAL·LACIONS ELÈCTRIQUES EN ALTA I BAIXA TENSIÓ. DISSENY I DESENVOLUPAMENT DE QUADRES ELÈCTRICS, QUADRES DE COMANDAMENT I AUTOMATS PROGRAMABLES PER A INSTAL·LACIONS INDUSTRIALS. MUNTATGE I INSTAL·LACIÓ DE FIBRA ÒPTICA DE XARXA I DADDES. INSTAL·LACIONS D'AIRE COMPRIMIT. INSTAL·LACIONS FRED, CALOR I CLIMATITZACIÓ. INSTAL·LACIONS DE PROTECCIÓ CONTRA INCENDIS. INSTAL·LACIÓ DE TOT TIPUS DE FLUIDS. MECÀNICA INDUSTRIAL. MANTENIMENT INDUSTRIAL.

The validity of this certificate is dependent on an annualised monthly audit and on a complete review, every three years, of the management system.
The use and validity of this certificate are subject to compliance with the RINA document: Rules for the Certification of Social Responsibility Management System

First Issue	08.06.2018	Alessandro Romel Certification EMEA Region Senior Director
Revision Date	08.06.2018	
Expiry Date	07.06.2021	

RINA SIMTEX-O.C. S.R.L.
Str. Dr. Leonie Anastasievici, nr. 40,
corpul A sector 5, Bucuresti Romania

BC RINA SIMTEX - ORGANISMO DE CERTIFICACION SRL
P-0011: office@simtex.ro, www.simtex.ro
Bucuresti, Str. Leonie Anastasievici, nr.40, sector 5, J/40/9453/1999; RO 12051790
Tel/Fax: +40 21 6190451 / 54 / +40 21 6190553 / +40 726367806 / +40 741045154
Puncte de lucru:
Constanta, Str. Remus Opranu nr.10A, bl.13, sc.A ap.1, Tel.: +40 341 170080 / +40 341 170081 Fax: +40 341 170082;
Timisoara, Str. Pariz nr 2A, Cladire Central Park, Cam. 204, Tel.: +40 356 177551 Fax: +40 356 177 557



CERTIFICATE No. MRS-51/18

IT IS HEREBY CERTIFIED THAT THE SOCIAL RESPONSABILITY MANAGEMENT SYSTEM OF

ENTRERRIOS FACILITY SERVICES, S.A

POL. PRADILLO, C/ ANETO, PARCELA 15, PEDROLA (ZARAGOZA) - SPAIN

IN THE FOLLOWING OPERATIONAL UNITS

POL. PRADILLO, C/ ANETO, PARCELA 15, PEDROLA (ZARAGOZA) - SPAIN

IS IN COMPLIANCE WITH THE STANDARD

MRS 10000:2018

FOR THE FOLLOWING FIELD(S) OF ACTIVITIES

DISEÑO, DESARROLLO Y MONTAJE DE INSTALACIONES ELÉCTRICAS EN ALTA Y BAJA TENSIÓN. DISEÑO Y DESARROLLO DE CUADROS ELÉCTRICOS, CUADROS DE MANDO Y AUTOMATAS PROGRAMABLES PARA INSTALACIONES INDUSTRIALES. MONTAJE E INSTALACIÓN DE FIBRA ÓPTICA DE RED Y DATOS. INSTALACIONES DE AIRE COMPRIMIDO. INSTALACIONES FRÍO, CALOR Y CLIMATIZACIÓN. INSTALACIONES DE PROTECCIÓN CONTRA INCENDIOS. INSTALACIÓN DE TODO TIPO DE FLUIDOS. MECÁNICA INDUSTRIAL. MANTENIMIENTO INDUSTRIAL.

DESIGN, DEVELOPMENT AND ASSEMBLY OF ELECTRICAL INSTALLATIONS IN HIGH AND LOW VOLTAGE. DESIGN AND DEVELOPMENT OF ELECTRICAL PANELS, CONTROL PANELS AND PROGRAMMABLE AUTOMATA FOR INDUSTRIAL INSTALLATIONS. ASSEMBLY AND INSTALLATION OF FIBER OPTIC NETWORK AND DATA. COMPRESSED AIR INSTALLATIONS. FACILITIES COLD, HEAT AND AIR CONDITIONING. FIRE PROTECTION FACILITIES. INSTALLATION OF ALL TYPES OF FLUIDS. INDUSTRIAL MECHANICS. INDUSTRIAL MAINTENANCE.

CONCEPTION, DÉVELOPPEMENT ET MONTAGE D'INSTALLATIONS ÉLECTRIQUES EN HAUTE ET BASSE TENSION. CONCEPTION ET DÉVELOPPEMENT DE PANNEAUX ÉLECTRIQUES, DE PANNEAUX DE CONTRÔLE ET D'AUTOMATES PROGRAMMABLES POUR INSTALLATIONS INDUSTRIELLES. ASSEMBLAGE ET INSTALLATION DE RÉSEAU DE FIBRES OPTIQUES ET DE DONNÉES. INSTALLATIONS D'AIR COMPRIMÉ. INSTALLATIONS DE FROID, DE CHALEUR ET DE CLIMATISATION. INSTALLATIONS DE PROTECTION CONTRE L'INCENDIE. INSTALLATION DE TOUS TYPES DE FLUIDES. MÉCANIQUE INDUSTRIELLE. MAINTENANCE INDUSTRIELLE.

DISSENY, DESENVOLUPAMENT I MUNTATGE D'INSTAL·LACIONS ELÈCTRIQUES EN ALTA I BAIXA TENSIÓ. DISSENY I DESENVOLUPAMENT DE QUADRES ELÈCTRICS, QUADRES DE COMANDAMENT I AUTOMATS PROGRAMABLES PER A INSTAL·LACIONS INDUSTRIALS. MUNTATGE I INSTAL·LACIÓ DE FIBRA ÒPTICA DE XARXA I DADDES. INSTAL·LACIONS D'AIRE COMPRIMIT. INSTAL·LACIONS FRED, CALOR I CLIMATITZACIÓ. INSTAL·LACIONS DE PROTECCIÓ CONTRA INCENDIS. INSTAL·LACIÓ DE TOT TIPUS DE FLUIDS. MECÀNICA INDUSTRIAL. MANTENIMENT INDUSTRIAL.

The validity of this certificate is dependent on an annualised monthly audit and on a complete review, every three years, of the management system.
The use and validity of this certificate are subject to compliance with the RINA document: Rules for the Certification of Social Responsibility Management System

First Issue	08.06.2018	Alessandro Romel Certification EMEA Region Senior Director
Revision Date	08.06.2018	
Expiry Date	07.06.2021	

RINA SIMTEX-O.C. S.R.L.
Str. Dr. Leonie Anastasievici, nr. 40,
corpul A sector 5, Bucuresti Romania

BC RINA SIMTEX - ORGANISMO DE CERTIFICACION SRL
P-0011: office@simtex.ro, www.simtex.ro
Bucuresti, Str. Leonie Anastasievici, nr.40, sector 5, J/40/9453/1999; RO 12051790
Tel/Fax: +40 21 6190451 / 54 / +40 21 6190553 / +40 726367806 / +40 741045154
Puncte de lucru:
Constanta, Str. Remus Opranu nr.10A, bl.13, sc.A ap.1, Tel.: +40 341 170080 / +40 341 170081 Fax: +40 341 170082;
Timisoara, Str. Pariz nr 2A, Cladire Central Park, Cam. 204, Tel.: +40 356 177551 Fax: +40 356 177 557



LOW VOLTAGE

OUTDOOR AND INDOOR LIGHTING

- Great surfaces lighting
- Indoor industrial plant lighting
- Artistic and ornamental lighting
- Office lighting
- Public lighting



AERIAL AND GROUND CONVEYORS

- Aerial conveyors
- Ground conveyors
- Automatic stores

ELECTRICAL CONDUIT SYSTEMS FOR POWER DISTRIBUTION

- Power and lighting distribution
- Busbar system
- Feedings
- Great power machine feedings





HIGH VOLTAGE

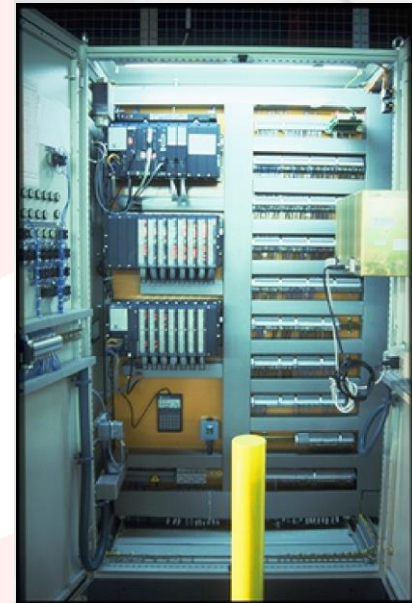
- Substations and transformer centers
- Aerial and underground cable laying
- Rural electrification
- Pole transformers for small power
- High Voltage protections, metering equipment and capacitors
- Projects, assemblies and maintenance





ELECTRICAL PANELS

- Power switchboards
- Motor switchboards
- Lighting switchboards
- Signal panels
- Automation panels
- Metering equipment panels





PHOTOVOLTAIC INSTALLATIONS

- **84.848 solar modules**
- **20 Inverters of 500 kW**
- **20 Transformers of 500 kW**
- **1 Transformer of 20 MW**
- **539 km cable**
- **340 km VELCRO**

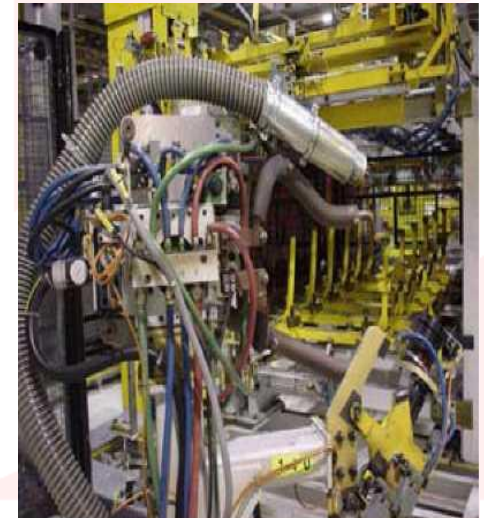
OPEL : WORLD'S LARGEST ROOFTOP SOLAR PHOTOVOLTAIC SYSTEM





The **FLUID MECHANICS** department performs different types of work :

- * Waste water systems
- * **Air conditioning and heating systems**
- * Collecting and pumping water systems
- * Installations and nets of **fluids** (Water, gas, steam, compressed air and water cooling)
- * **Fire prevention systems**
- * Turnkey solutions

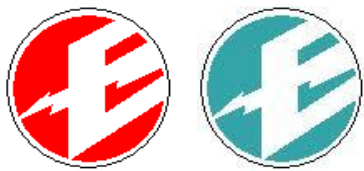




POTABLE WATER INSTALLATIONS

- Complete installation of potable water pumping groups located in the building 61 (Opel Spain), including all the pipelines from the tank outlet to different buildings
- PUMPING GROUP EQUIPMENT :
 - 4 stainless steel pumps, AISI 316 L with following performances (flow rate: 80.2 m³/h and manometer: 70,3 m height), and with all the accessories required for its control and subsequent maintenance
 - 4 deposits of 750 liters for the installation of potable water have been installed. Deposits are replaceable, completely waterproof membrane of synthetic rubber flexible, suitable for water, which keeps in permanent isolation air water, excluding any pollution or dilution of the air in the water



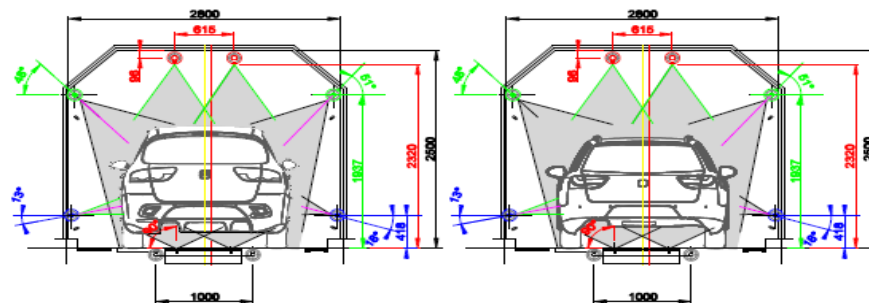
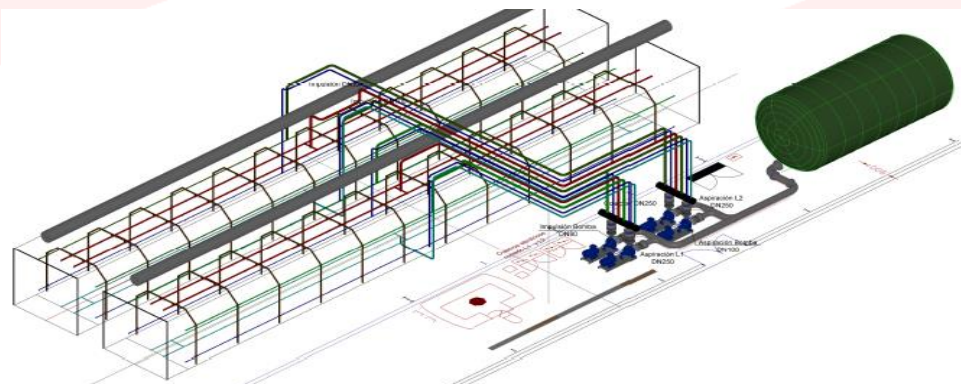


RAIN TEST TURNKEY INSTALLATION

Rain test tunnel for SEAT S.A.

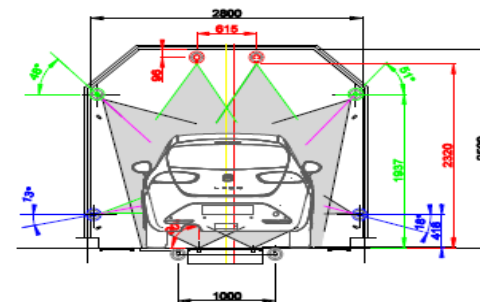
Tunnel spray, to rain test, with an independent main cabinet control.

Regulation of pumps is done by frequency variators, getting a stabilization of pressure and an energy saving



SISTEMA ROCIADO NUEVO L1-L2 (ALTEA XL)

SISTEMA ROCIADO NUEVO L1-L2 (EXEO)



SISTEMA ROCIADO NUEVO L1-L2 (LEON)



2 CHILLERS 2500KW INSTALLATION

Installation of two CARRIER-SANYO chillers model TSA - 16 TJ of 2.445 KW's cold, including :

- Steam pipelines of 1 Kg/cm² from the principal collector of power to the chiller plant entrance
- Steam pipelines from the absorption group up to the current condensate deposit
- Cold water pipes from distribution to the inlet manifold and the chiller outlet
- Installation of the regulation elements.





ASSEMBLY LINES

- **Development of the mechanical project.** Design of transport systems with definition and calculation of drives
- **Development of the electric project.** Main panel design, decentralised stations and field equipment
- **Control equipment configuration and communication networks**
- **Manufacturing, assembly, testing and start up** for an optimal automation
- **Documentation.** Mechanical drawings, electrical drawings by Eplan, program listings, screen design, device parameterization and spare parts list in order to ensure maximum availability of the installation
- **Certifications**



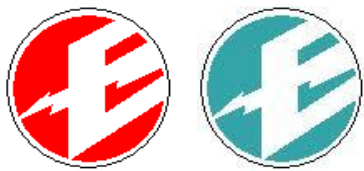


OVENS AUTOMATIC BUFFER

MECHANICAL EQUIPMENT

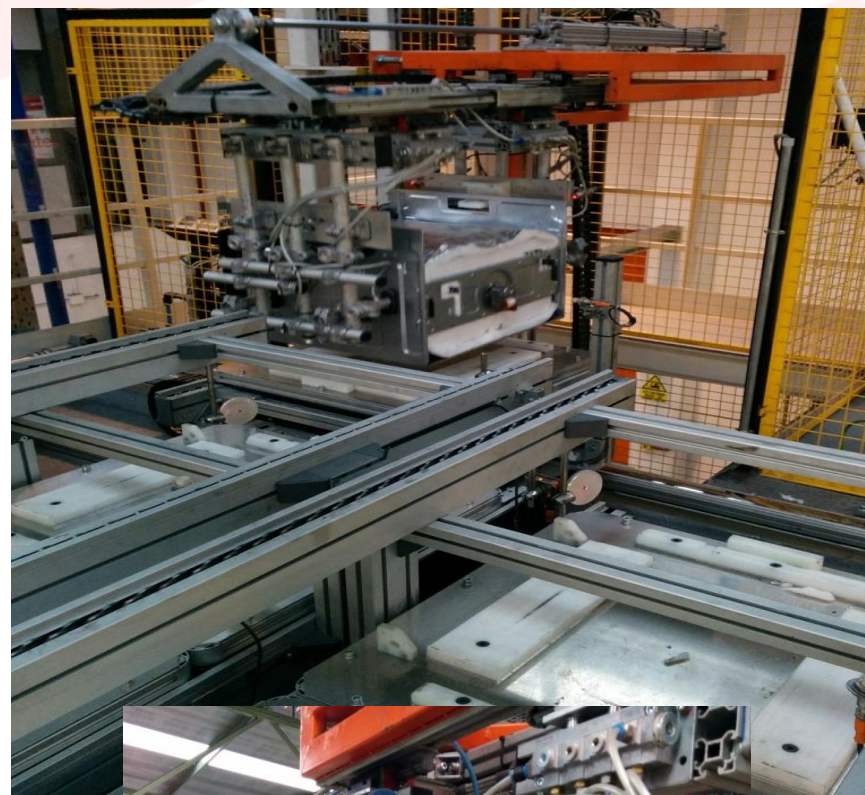
- ❑ Elevator with a travel of 5.000 mm approximately
 - Elevator with asynchronous gearmotor.
 - Manipulator equipped with :
 - Transfer with 3 positions for collecting empty pallets in the 3 lanes.
 - Pneumatic system for manipulating the ovens, with motorized transverse movement
- ❑ Three transport circuits, with two levels: the upper level for the ovens accumulation and the lower level for the pallets return. Simple chain accumulation conveyors with pneumatic stoppers.
- ❑ Ovens downward elevator (same design as elevator)
- ❑ Main metallic structures
- ❑ Fences, with access for maintenance, equipped with safety devices.





ELECTRICAL EQUIPMENT

- ❑ Central control panel y peripheral panel equipped with a **Simatic S7-300 control PLC** :
 - **CPU 317F-2 PN/DP** with Profinet and Profibus integrated networks, both with Profisafe MMC profile
- ❑ Decentralized boxes to distribute power and control, equipped with :
 - ET 200S station with Profibus interface, digital I/O modules for sensors and actuators, Safety I/O modules for safety equipment and emergencia areas
- ❑ **Two operator controls** equipped with **HMI TP900**
- ❑ Access door pressbuttons, general sensors.





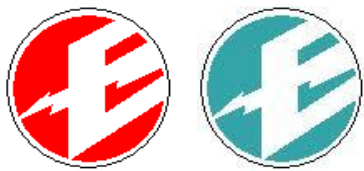
TIRE ASSEMBLY LINE

Design, manufacturing, assembly and startup of the TIRE ASSEMBLY LINE with the following requirements :

- Cycle time : 12 seconds.
- Tire-cover-wheel conveyors with 1000 mm width. Conveyors with 0,6m/s speed except the last 1750 mm section with a variable 0,6-1m/s speed.



- Conveyors of pallets in supplying area and robot-wrapping area are prepared for 2 pallet models, 1200x1200 mm with 24Kg/unit and 1900x1200 mm with 38 kg/unit.
- The pallets conveyors speed is 130 mm/sg.
- The set of wheels maximum weight is 35kg.



MECHANICAL EQUIPMENT

Supplying area

Roller conveyor for the pallet reception.
Approximate weight 800 kg

- Scissor lift for tire depalletizing
- Roller conveyor installed on the scissor lift for 1500x1500 mm pallets
- Speed conveyor : 130 mm/seg
- Conveyor approximate height : 530 mm
- Crane for metallic pallet exit, maximum 250 kg
- Supplying area fence with door
- The roller conveyors total length is 22 meters



- ❑ Robot-wrapper area
- ❑ **Robot ABB IRB6700 155/2.85**
 - Prepared to manipulate 2 wheel sets per cycle, cover and pallet
 - Fences with access door for manual pallet charge



WRAPPER – FILM COVER

Roller conveyor for pallets to wrapper entry.

Approximate weight 1.000 kg

❑ Wrapper Line :

- Rotary roller table
- Maximum height 2400 mm
- Wrapping of pallets
- Automatic load height detection
- Maximum weight : 1800Kg
- Siemens PLC and LCD creen
- Plunger for installation of vacuum suction cups
- Vacuum with suction cups for cover removal



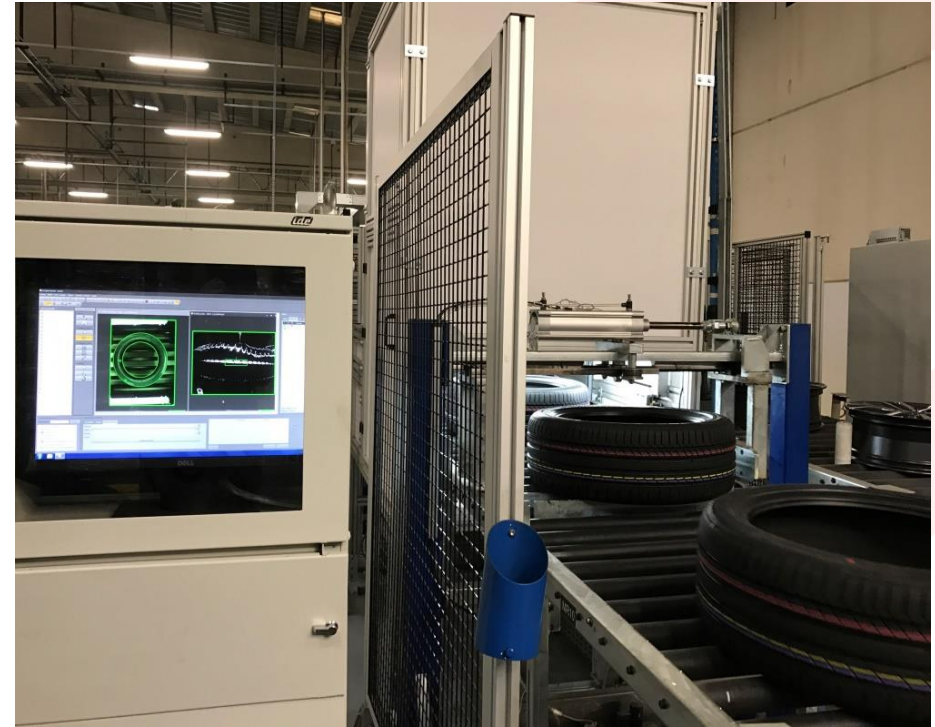
❑ Film Cover :

- Hot wire Film cutter
- Electrical panel with Siemens PLC
- Labeler



ELECTRICAL EQUIPMENT

- ❑ Control **PLC : Simatic S7-300**
- ❑ **CPU 319F-2 PN/DP**, Profinet and Profibus nets
- ❑ **Touch Panel TP1200 Comfort.**
- ❑ **Two HMI Operator controls**, equipped with:
 - Metal enclosure
 - Operation touch Panel, TP1200 Comfort
- ❑ Safety equipment:
 - Door security endpoints
 - Optical barriers of security in accesses to the palletizing, wrapping and exit areas
 - Emergency stop buttons



- ❑ **Artificial Vision System** to verify the correct position in the transport band



The Automation department offers to our clients a complete study, choosing the right components and providing the specialized technical knowledge to perform their automation projects.

The Automation Department is composed by twenty-five programmers who coordinate their work with the mechanical and electrical departments. We have the necessary infrastructure to develop the different types of programming. PLCs, robots programming and SCADA systems.

PLC programming is the fundamental base of our work, using the following main brands :

- SIEMENS
- MODICON
- TELEMECANIQUE
- BOSCH
- SCHNEIDER
- OMRON
- MOELLER
- GENERAL ELECTRIC
- ROCKWELL (ALLEN BRADLEY)



SIEMENS



AB Allen-Bradley



MODICON

BOSCH



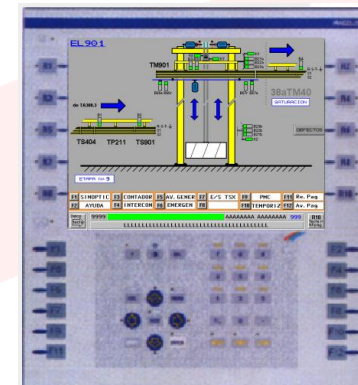
PROGRAMMING DISPLAY AND OPERATIONAL ELEMENTS:

➤ SCADA DISPLAYING AND INDUSTRIAL PROCESS :

- WinCC (SIEMENS)
- CMI (CONTROLMATIC)
- Intouch (WONDERWARE)
- Monitor Pro, Vijeo Citect (SCHNEIDER)
- Proficy HMI/SCADA Cimplicity (General Electric)
- Zenon

➤ HMI OPERATOR PANELS :

- PXT 305 (PILZ)
- BT 20 (BOSCH)
- XBT (TELEMECANIQUE)
- OP 25, OP 37, MP377 (SIEMENS)

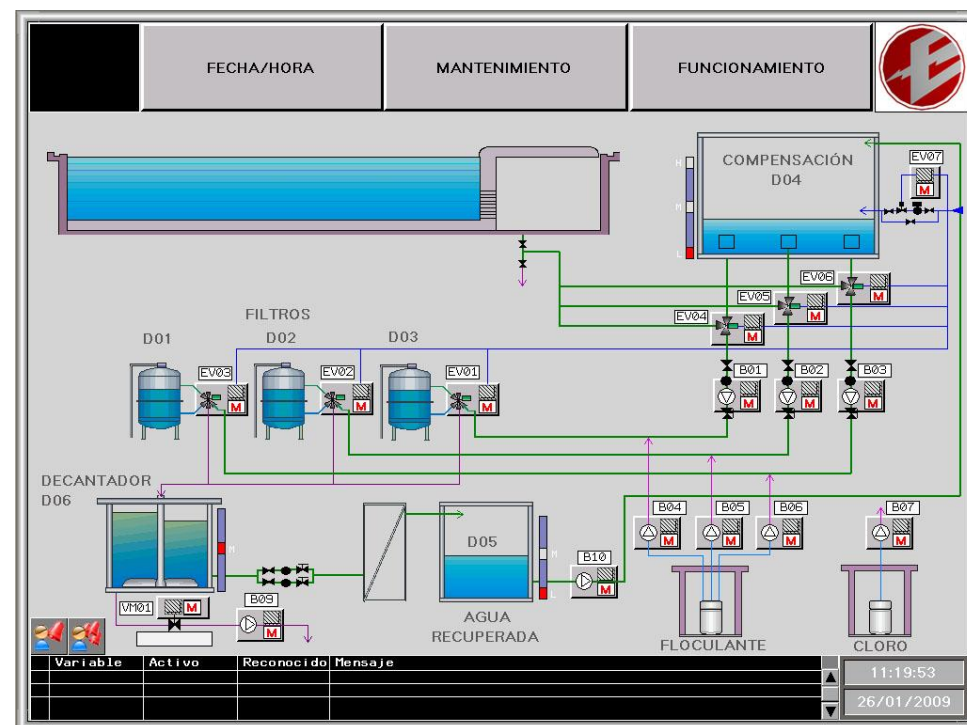


PERIPHERAL PROGRAMMING:

- MOBY
- LAZO DE CONTROL PID
- CONTROL DE POSICIONAMIENTO
- ROBOTS

COMMUNICATION NETS:

- AS-I
- PROFIBUS
- PROFINET
- ETHERNET
- MODBUS

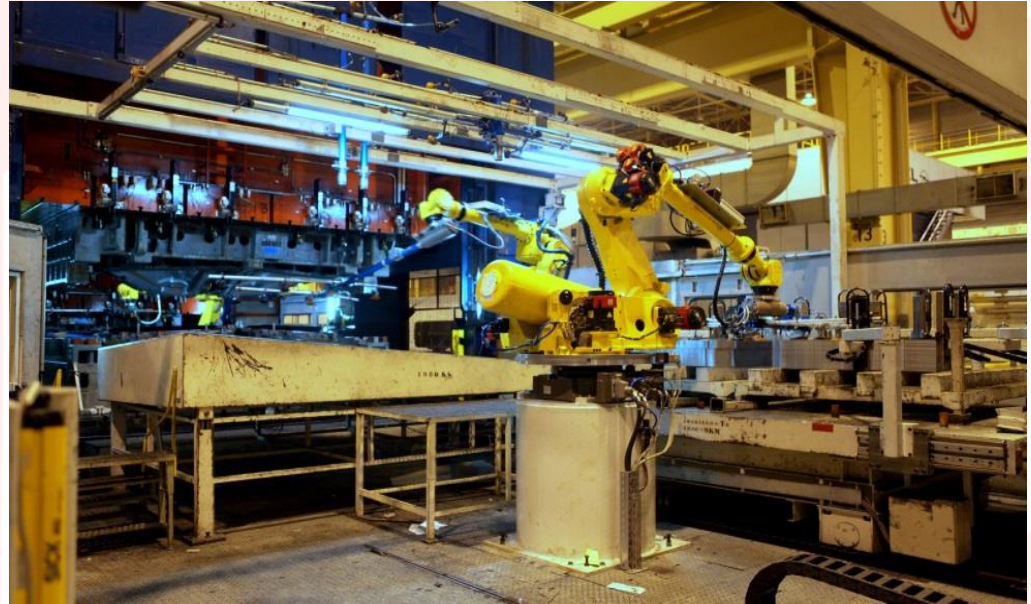




AUTOMATION OF PRESSLINE 18

11 FANUC robots were installed. With the old ABB line robots achieved an average 7 beats/min. Through the current change, we were able to increase the line to an average of 10.5 beats/min.

This included a complicated development to reach that increase of strokes, we performed a detailed engineering to adjust positions and precisions, in order to get a more effective, quicker and faultless line.





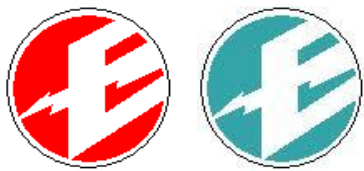
Headrest test station

It was designed to perform, using a pair of servo motors, a functional check of active safety system on all the seats that were manufactured by our customer. The test was divided in two attempts. In the first attempt the servomotors must press over the back **250N** without the safety system goes off, and in the second attempt it must push **750N** and the headrests must be jumped ahead a minimum distance of 36mm. This distance is measured by **two optic laser** pointing to the headrests of every seat pairs.



The PLC to control the process is a **Simatic IM 151-8PN/DP** equipped with digital and analogical inputs and outputs and communication ports Profibus-DP and RS485(Modbus).

The control unit for the servomotors is a **Simotion D425**, and the control unit for the interface with the operator is a **touch panel TP177STN 5,7"** bluemode.



Crossmember Fixing Station

Automation and control of the pokayokes operations that is required by the new option “Active headrest” of the **front seats** of Meriva NG. The process consists of the **control and automatic checking** of riveting sequence and screwing of the lateral crossmember. Initial phase of the integration in the manufacturing sequence of the seats by means of reading by scanner of LCB infrared of “Broadcast ID” in each seat.



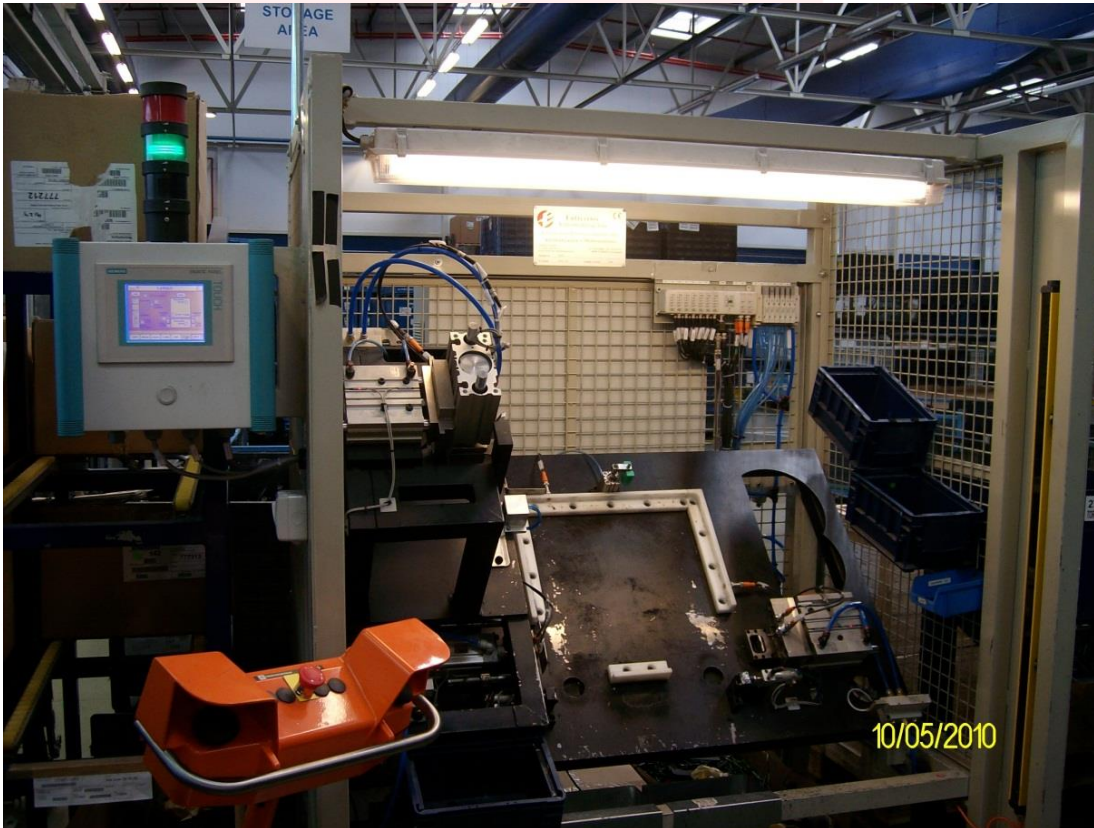
□ EQUIPMENT

- 1 PLC Siemens S7-200
- 1 Touch Panel TP177



Assembly of rods and washers

Automation of the press task and coupling of all instruments that integrate the **Meriva rear seat inclination regulation**. **Verification and control** of all the shared pieces in the process. Machine whole compounds of pneumatic actuators which assembly in the same sequence as 20% backs as the 40% inclination.



□ EQUIPMENT

- 1 PLC Siemens S7-300.
- 1 Profibus slave block, EX250
- 1 Touch Panel TP177.



Wheel Conveyor at Opel Spain factory

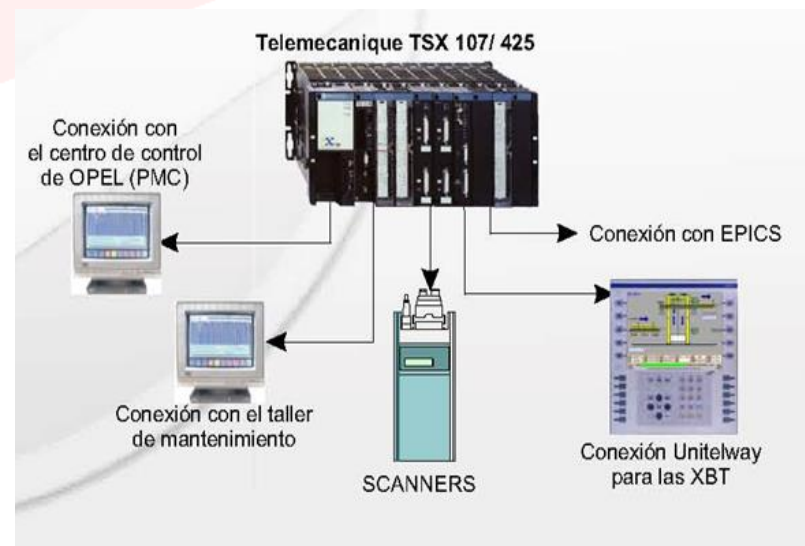
A **500 meter conveyor** takes the wheels **from the unload station to the final positioning into the car**. During the path the **wheels are unstacked**, taking part in a conformity control, lubricated and finally distributed in two production lines.

The installation is completely automatized :

- **6 electrical panels and 6 Telemecanique TSX107 PLCs**
- **40 modules electrical panels**
- **Around 5000 inputs and outputs**
- **100 motors, 8 elevators and 20 variable speed drivers**
- **2 lubricating wheel stations**
- **1 automatized unload dock of trucks**
- **3 bar code reading stations**
- **1 control system with encoders**

Press Line 10 Automation

This project was done at Opel Spain factory, assembly and programming of **8 electrical panels in connection with Siemens PLCs in order to control 10 ABB robots of the load and unload press** in the lines 3, 10, 17 and 18 in building Z-61





Robot programming



38 robot programming in the press shop at Opel Spain factory. The necessary changes are done in order to adapt the robots on the press lines for new Monocab model production

The changes affect the robots, where 20 new pieces, the PLCs that operate the presses, displays and SCADAs, are programmed covering the lines

The new pieces were programmed in order **to reduce the production time (strikes per minute)** for the Monocab model production

Electrical Paths Automation Wax Building 38

The automation consisted of the new functional group introduction, modification and the existing one extension. All electrical and programming of the installation components has been designed, developed and implemented

This installation was done with the aim of **bodywork transportation from the corrosion-inhibiting application cabinet output to the unload ground conveyors, which carry the bodywork to the final assembly building**



The transportation was done by means of **500 meters of electric paths** divided in two lines and whose path elevators, direction changes, and **transfer station to the ground groups are crossing**. Two **octopus return lines** were taking part which add up to 200 meters

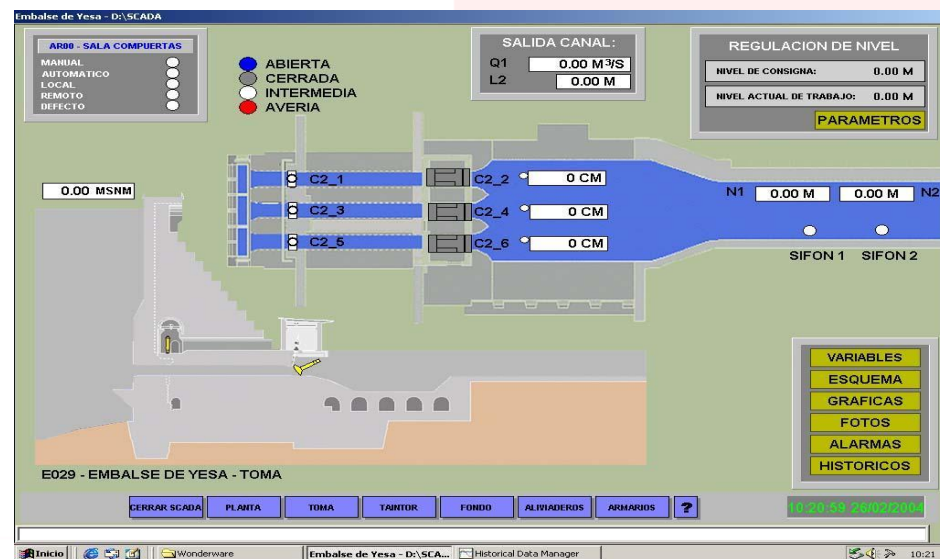
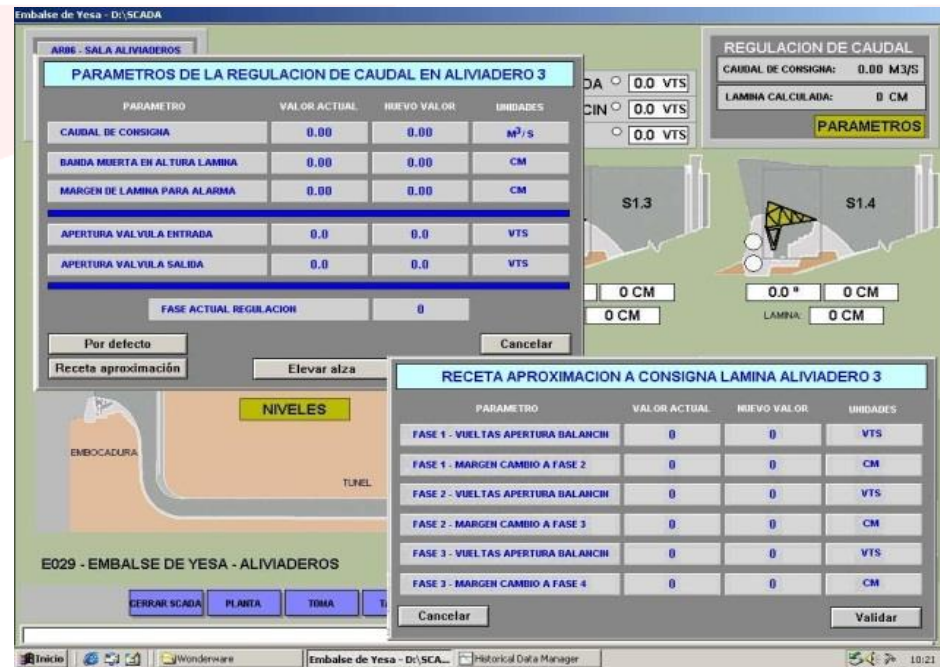


Lock gate automation in Yesa reservoir (Zaragoza, Spain)

- **Irrigation Channel Gate:** 3 lock gates in parallel for feeding the Bardenas irrigation channel with level regulation in absorber bowl previous to outlet lock gate
- **Canal Outlet Gate:** Lock gate type Tayntor, flow regulation according to applications from Irrigation Organization Canal.
- **Reservoir Bottom Gate:** Necessary outlet to get the ecological level in the basin of the Aragón river
- **Emergency Outlet Gate:** Outlets to regulate the water sheet height which have been spilled to the river when the dam is at maximum levels

Project equipment:

- 1 **PLC S7/300** with decentralized input/output modules **ET200M** with **optic** and **electric Profibus/DP**
- **HMI TP270** and **Scada Intouch**





Automation of water and tributary treatment plant in the Combined Cycle Power Plant of Aceca (Toledo, Spain)

Automation for the treatment of feeding water to turbines by means of filtering, decalcifies, deionization, reverse osmosis and reactive dosage by means of the following components:

- 1 PLC Redundant Modicon Quantum with:

- 150 analogic signals
- 900 digital signals

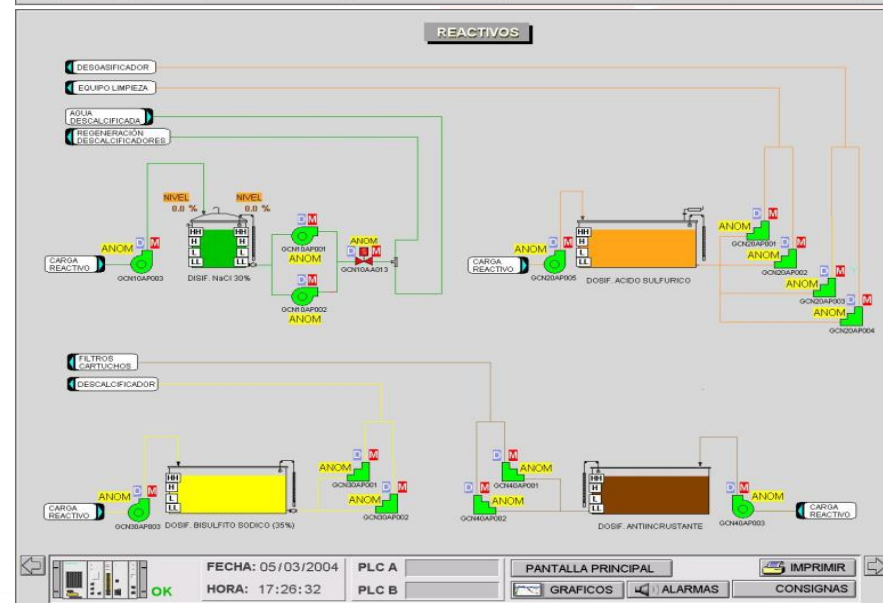
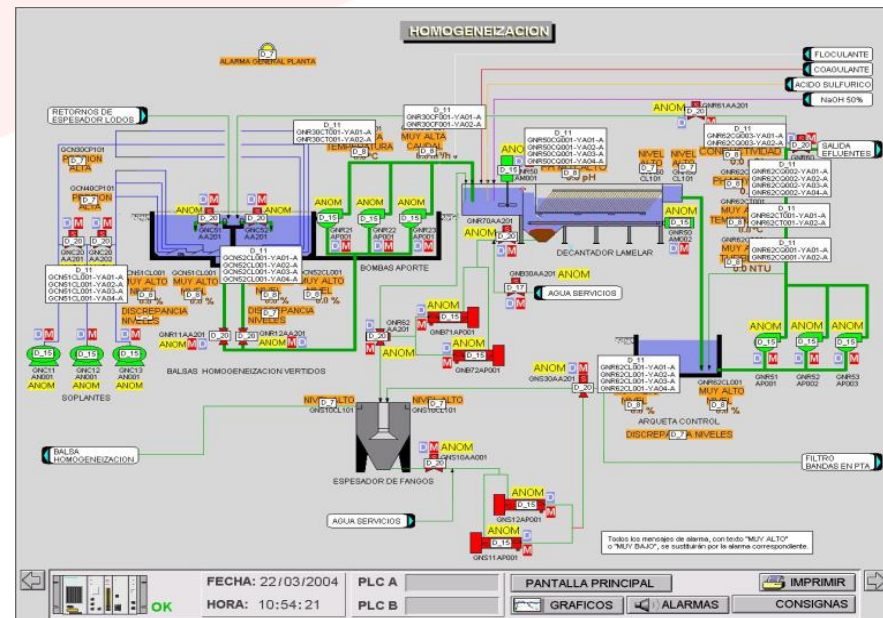
- 1 Scada Monitor Pro 7.2

Automation for the treatment of the tributary water by means of blending and reactive dosage with the following components:

- 1 PLC Modicom Quantum Redundant with

- 35 analogic signals
- 300 digital signals

- 1 Scada Monitor Pro 7.2





Automation of paper machine MP8 at Saica factory (Zaragoza, Spain)

Automation of paper machine, as dry as humid zone, of the paper machine 8 (MP8) of Saica, by means of the mixture of paper paste, drying, extrusion and coil with the following elements:

- 2 Siemens **PLC S7- 414 3DP** :

- 96 analogic signals
- 480 digital signals

- 5 HMI Siemens **MP-370 15"**

Displaying and control of PCS-30KTA plant of sodium percarbonate in FMC Foret

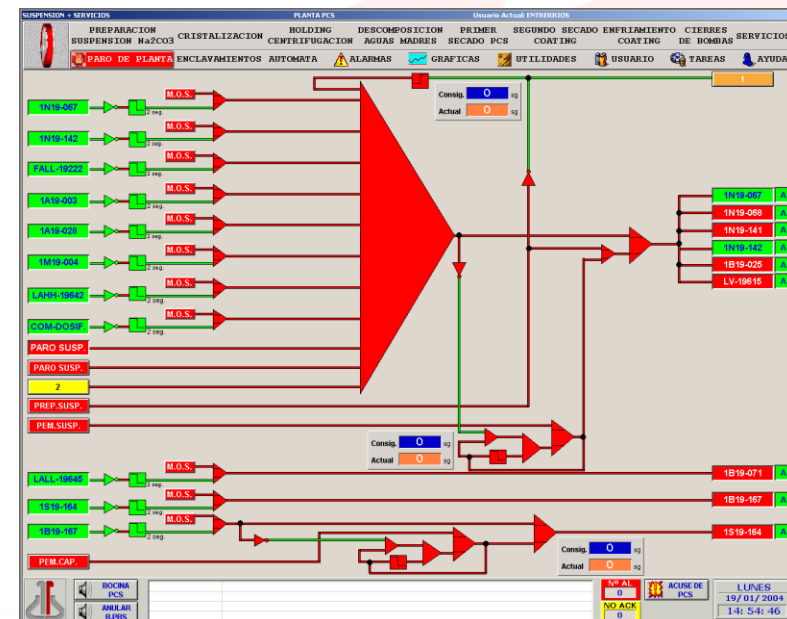
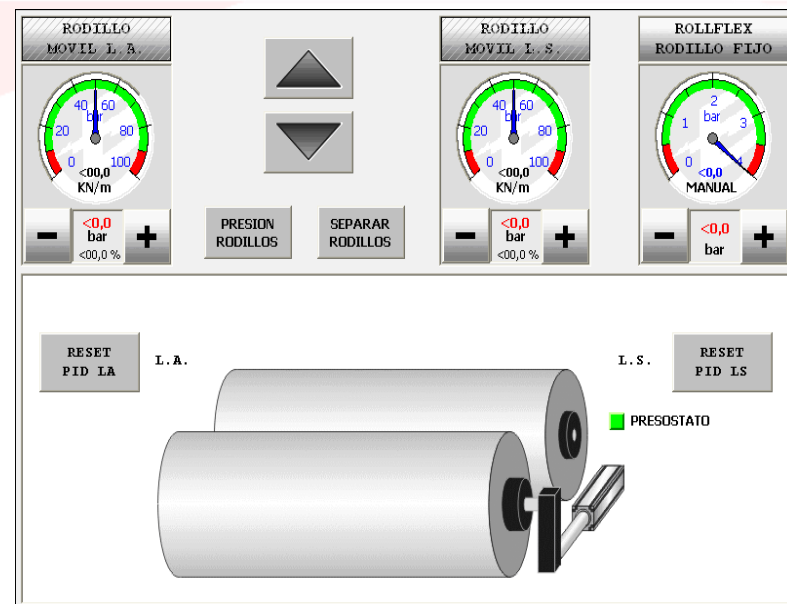
Displaying and control to prepare the suspension processes of sodium percarbonate, cristallize, centrifugalization, water descomposition, first drying, second drying, cooling, pump and service lock, by means of the following elements:

- 1 Schneider PLC **Quantum 534**

- 184 analogic signals / 352 digital signals

- 1 Scada **Monitor Pro 7.0**

- 1 **Ethernet** communication card






Slitting machine for the press building in Opel Spain:


Automation of process of inlet sheet into the slitting machines of the lines 8, 10, 14 and 16, by means of hydraulic and pneumatic regulation, the speed control and synchronization of inlet sheet into the slitting machines of press lines. 4 Pilz PLCs were installed raising the safety to 4 category.

Project equipment:

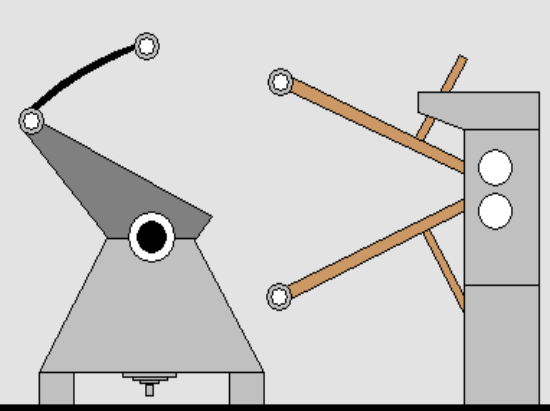
- 4 Siemens PLC S7- 400
- 2304 digital signals
- 4 safety Pilz PSS SB PLC
- 2 Siemens touch screens MP-370
- 2 Siemens touch screens TP-37



FECHA: martes, 01 de agosto de 2006HORA: 10:50:17



DEVANADORA



POSICION DEVANADORA (mm)	
REAL	TEORICO
0	0

PRESION DE RODILLOS IMPULSION AUX. (Bares)		
-	0,0	+


PERTURBACIONES

3KIM // VENTILADOR MOTOR
3Q4 // MONITORADO MOTOR HIDRAULICO
3Q6 - 3Q7 // GUARDAMOTOR PUERTAS 5 Y 6
FALLO VARIADOR
ALARMA VARIADOR

PERTURBACIONES ENCODER

ESTADO DIODO LASER
INTENSIDAD DIODO BAJA
TEMPERATURA ALTA
ERROR HARDWARE
DIODO O REFLECTOR SUCIO

VOLVER


MENU

PIEZA Nº: 0REFERENCIA:



SCADA INDITEX Logística Plataforma Europa (Bershka, Stradivarius y ZARA)

The alarm viewer developed by our SCADA department allows the expansion of 10 extra points of information to be customized by the user improving the capabilities of the standard product Cimplicity of General Electric helping both maintenance and production

The screenshot displays the SCADA interface for the INDITEX Logística Plataforma Europa, showing multiple windows for equipment monitoring and control.

Windows visible:

- A2102DROP557:** DROP- Entrega. Includes a 3D model of a drop mechanism, status messages (ME - Mensajes de Estado, MF - Mensaje de Fallo), and a layout diagram.
- A2101BP576_T4:** BP576_T4. Includes a 3D model of a bypass mechanism, status messages (ME - Mensajes de Estado, MF - Mensajes de Fallo), and a layout diagram.
- A2101VT017:** VT017. Includes a 3D model of a repartidor (distributor) and status messages (ME - Mensaje de Estado, MF - Mensaje de Fallo).
- A2102M2_9:** M2_9. Includes a 3D model of a motor and status messages (ME - Mensajes de Estado, MF - Mensaje de Fallo).

Legend (Leyenda):

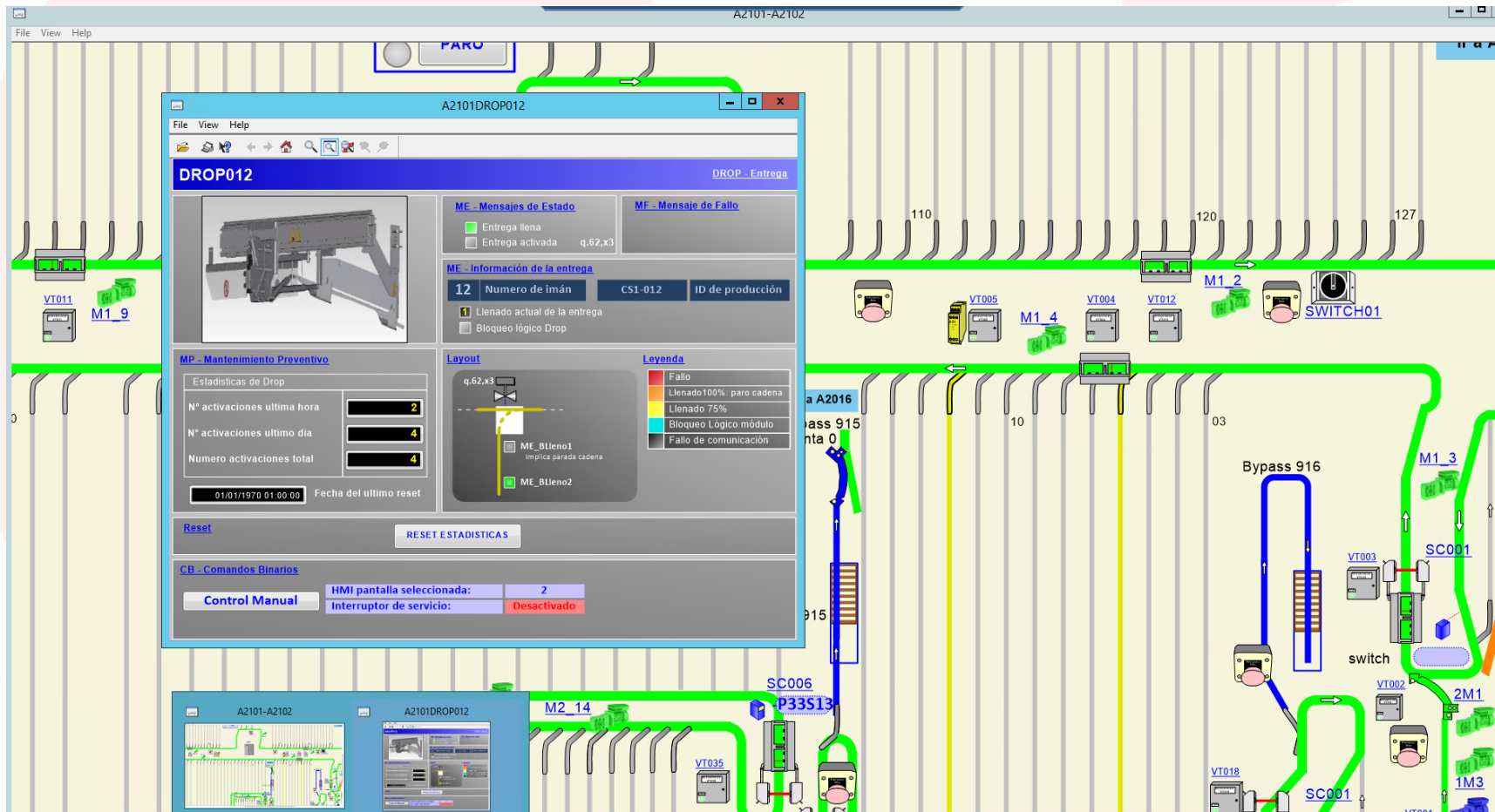
- Fallo (Red)
- Llenado 100%: paro cadena (Yellow)
- Llenado 75% (Orange)
- Bloqueo Lógico módulo (Cyan)
- Fallo de comunicación (Grey)
- Encendido/Automático (Green)
- Modo servicio/Mito (Yellow)
- Fallo (Red)
- Preparado/En espera (Blue)
- Saturado (Orange)

Manual a: A2101VT017



SCADA INDITEX Logística Plataforma Europa (Bershka, Stradivarius y ZARA)

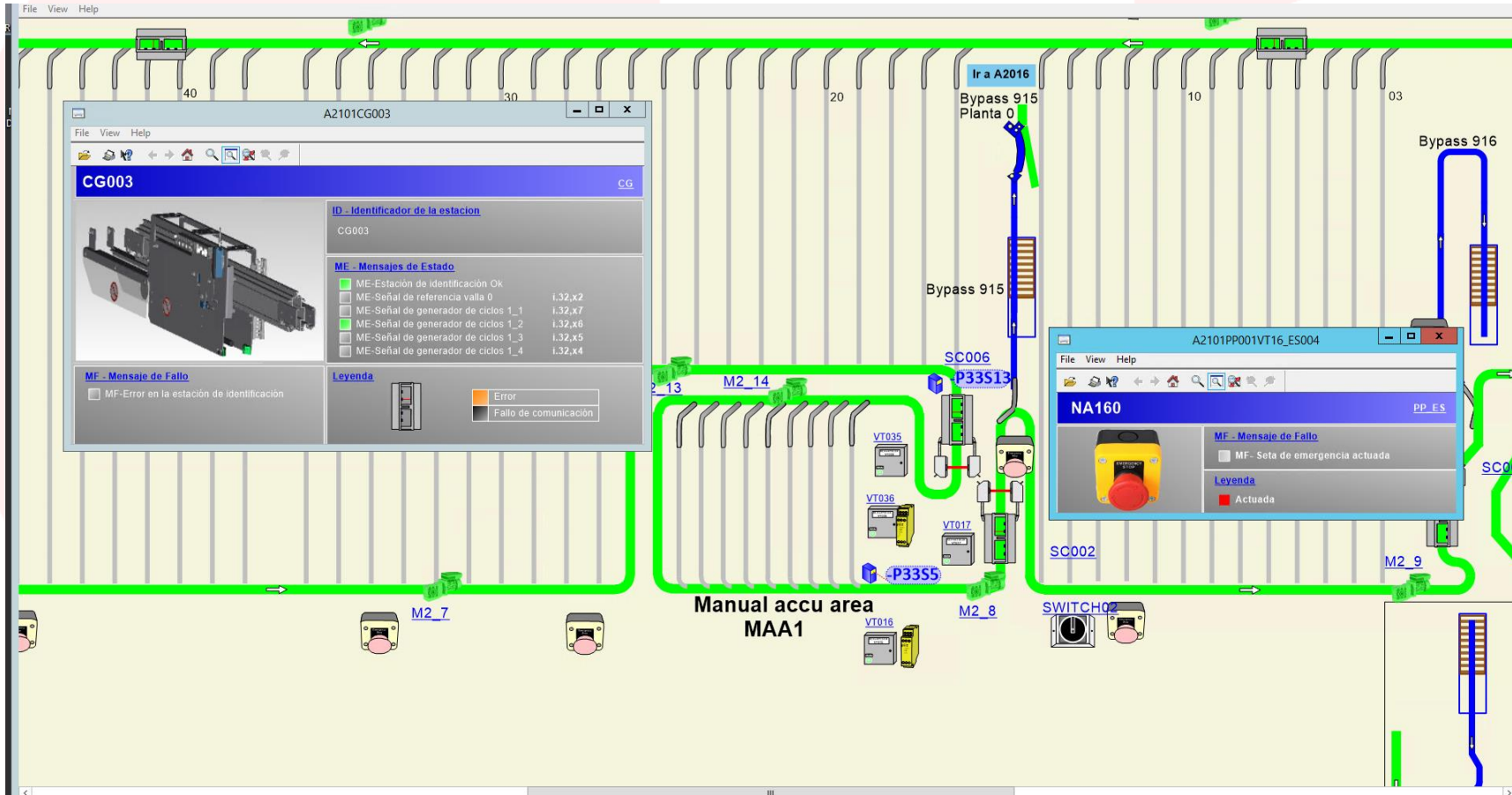
The extra information is saved into a SQL Database by a process developed by our SCADA department that improves the capabilities of the Cimplicity product of General Electric, likewise a second process allows the reception of certain critical alarms via e-mail





SCADA INDITEX Logística Plataforma Europa (Bershka, Stradivarius y ZARA)

Developed using General Electric Cimplicity (OOP), the project monitors 92 PLCs in four floors with a storage capacity of the largest in the world, the conveyor is displayed in green for correct operation, in yellow for a 75% saturation, in orange if it is stopped by a 100% saturation, blue paused, red stopped by emergency, black without connection to the system





ARTIFICIAL VISION, MARKING, TRACEABILITY

Entrerríos Automatización offers global solutions of **industrial traceability and artificial vision**. We supply components and know-how, for the quick and professional achievements in the industrial **identification tasks, traceability and optic inspection**. We link the different components of the product range for a unique and customized solution in the control and traceability projects of our clients

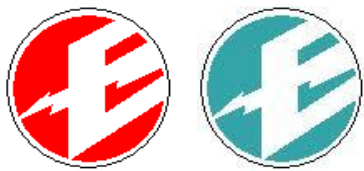
We have the specialized work team with great experience in the different areas, which play a role in the **traceability cycle and quality control**

- **Marking and industrial identification**
- **Code reading**
- **Optic controls with artificial vision**
- **Integral management of the traceability**

Our main suppliers are:

- **Sic-Marking**
- **Microscan**
- **Label Vision Systems**
- **Vision Control**
- **Vision Components**
- **etc ...**

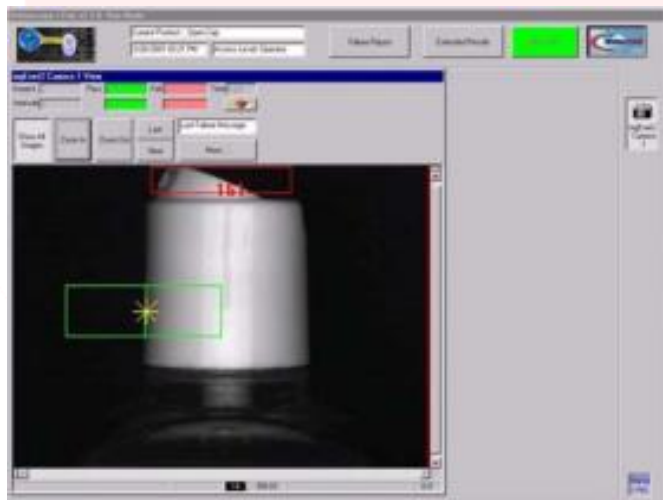


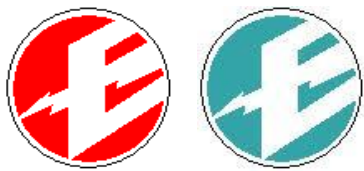


Artificial vision

With our experience in artificial vision systems in the industry world, we provide solutions to OCR character recognition, level measurements, color identification, analysis and surface studies, etc., by means of elements as measurement laser, high resolution cameras (intelligent or with PC connection), lightings and optics:

- Complete camera range (intelligent or PC based ones)
- Lighting equipment: special lighting, telecentric optics, lasers
- User interface





Identification methods

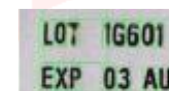
We provide different **identification methods** of our codes:

- Barcode
- PDF 417 Code
- Alphanumeric Code
- DATA MATRIX Code
- RFID (Radio Frequency Identification)

Marking equipment and systems

In order to make the marking of the product units we provide different methods:

- Laser systems (diode, lamp, CO2)
- Ink injection system Ink-Jet
- Ink printing system HP-Jet
- Marking by Micropuncture / Scratching
- RFID label record





PRODUCTIVE MAINTENANCE, ELCTRICAL, MECHANICAL, ORDINARY CLEANING, INDUSTRIAL CLEANING AND CIVIL WORKS

❖ Experience in corrective, preventive, predictive, 0 hours (overhaul) and running maintenance since 1986 in different factories such as:

☐ **OPEL – PSA - STELANTIS**

☐ **C.A.F.**

☐ **CLH-EXOLUM**

☐ **FMC FORET**

☐ **LECIÑENA**

☐ **BOSAL**

☐ **VICASA**

☐ **SAICA**

☐ **TORRASPAPEL**

☐ **KEIPER IBERICA**

☐ **PROMA HISPANIA**

☐ **PANISHOP**

☐ **VIA AUGUSTA**

☐ **MERCIER**

☐ **LAPESA**

☐ **SCHAKO**

☐ **LEAR**

☐ **JOHNSON CONTROLS**

☐ **TEKA**

☐ **PLASTIC OMNIUM**

☐ **FAURECIA**

☐ **ADIENT**

☐ **SEAT**

☐ **B/S/H/**

☐ **AAA IBERICA**

☐ **ARCELOR MITTAL**

☐ **MONDI**

☐ **EXIDE**

☐ **ARAVEN**

☐ **CARRERAS**

☐ **HMY YUDIGAR**

☐ **MOWI**



FACILITY MAINTENANCE STELLANTIS (OPEL ZARAGOZA)

Complete Facility factory maintenance (fire prevention, cooling, heating, industrial water, drinking water, LV, HV, etc...) and the water plant, the manpower for this services is **70 employees**.

TECHNICAL CLEANING PAINTSHOP EN STELLANTIS (OPEL ZARAGOZA)

Technical cleaning of the general installations and the air controlled delimited side, the manpower for this services is **55 employees**.

MAINTENANCE AT SEAT BARCELONA

LV electrical maintenances for all Seat facilities in Barcelona. (Seat Martorell, Seat Zona Franca, Centro Técnico, Seat Componentes, etc...), the manpower for this services is **15 employees**.

Mechanical maintenance for the conveyor transport lines for the assembly workshops 8,9, 10, the manpower for this services is **35 employees**.



MAINTENANCE AT VALEO ZARAGOZA

Complete facility maintenance of the infrastructure and the production process, we also does the process moulds and dies, the manpower for this services is **15 employees.**

MAINTENANCE AT VALEO JAEN

LV electrical maintenance for the complete facility and the electrical and mechanical maintenance for the assembly production process, the manpower for this services is **60 employees.**

MAINTENANCE AT CAF ZARAGOZA

Electrical and mechanical maintenance of the complete facility, the manpower for this services is **8 employees.**

MAINTENANCE AT HITACHI-ABB ZARAGOZA

Electric-mechanical maintenance of the complete facility and the production lines, the manpower for this services is **10 employees.**



INSTALLATIONS IN AREAS WITH HIGH RISK OF EXPLOSION (ATEX)

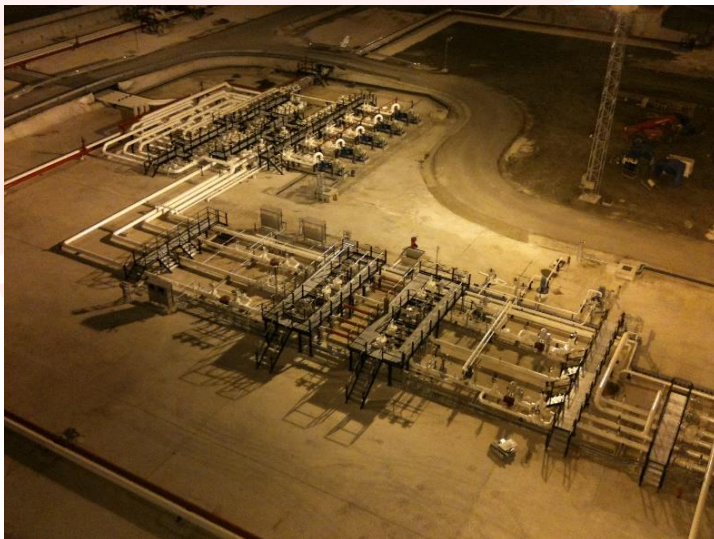
- ❖ Experience in electrical and control assemblies for the petrochemical sector, transportation and distribution of OIL&GAS
- ❖ Our clients are companies with very strict safety and operation protocols which are required in this sector
- ❖ Strategic works and "turnkey" projects for the entire electrical work of a new plant
- ❖ Leading companies in this sector trust in us such as CLH, Vopak Terquimsa, WÄRTSILÄ, Eltherm





INSTALLATIONS IN AREAS WITH HIGH RISK OF EXPLOSION (ATEX)

- ❖ High voltage, low voltage, industrial electronics and lighting of large industrial areas
- ❖ Storage of fuel and chemical products
- ❖ Great power pumping and transportation as oil and gas pipelines, medium power pumping such as truck loading, etc
- ❖ Design, engineering and procedures related with this type of installations





INSTALLATIONS IN AREAS WITH HIGH RISK OF EXPLOSION (ATEX)

- ❖ New installation of CLH in El Arahal (Sevilla)
- ❖ Electrical installation for the set of tanks (Cubeto 10) of Terquimsa
- ❖ New CLH installations in Burgos
- ❖ New HV and LV assemblies in the CLH plant (Mahón)
- ❖ Hydrant: Torrejón – Adolfo Suarez (Barajas) Airport
- ❖ HV and LT electrical maintenance of CLH plants in Aragón and Cataluña





SAFETY IN MACHINES AND EQUIPMENT R.D. 1215/97

- ❖ Movement of industrial and heavy machinery
- ❖ Dismantling production lines
- ❖ Manufacturing of metal structures and custom machinery





SAFETY IN MACHINES AND EQUIPMENT R.D. 1215/97

- ❖ Corrective and predictive maintenance
- ❖ Repair of electrical breakdowns
- ❖ Pneumatic and hydraulic system maintenance





MANUFACTURE AND ASSEMBLY OF METAL STRUCTURES

- ❖ Technical and economic studies and development of projects for industry and civil works
- ❖ Design and calculation using advanced software: Autodesk MEP, Advanced Steel, Robot, 3D Solidworks - Dassault
- ❖ Experience in manufacturing metal structures, both heavy and light according to the European standard EN-1090-2
- ❖ Experience in assembly and disassembly of metal structures, roofs and facades
- ❖ Assemblies of own equipment and of other manufacturers





MANUFACTURE AND ASSEMBLY OF METAL STRUCTURES





ENTRERRIOS
GROUP

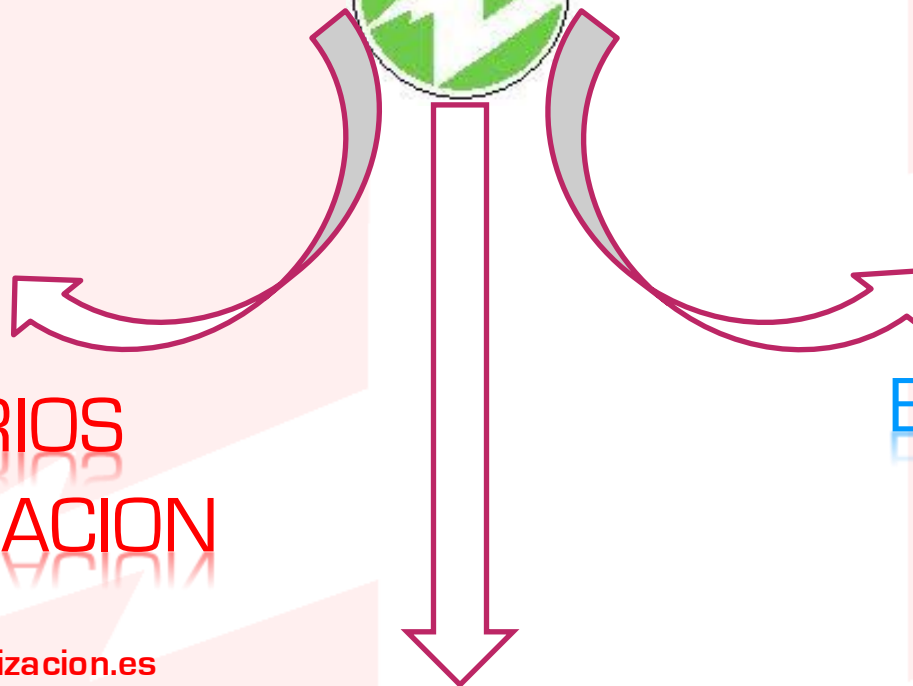


ENTRERRIOS GROUP SINCE 1986 DOING TECHNOLOGY EASY FOR YOU



ENTRERRIOS
AUTOMATIZACION

www.entrerrios-automatizacion.es



ENTRERRIOS
FACILITY
SERVICES

www.entrerriosfs.es



www.geyselmainzaragoza.com